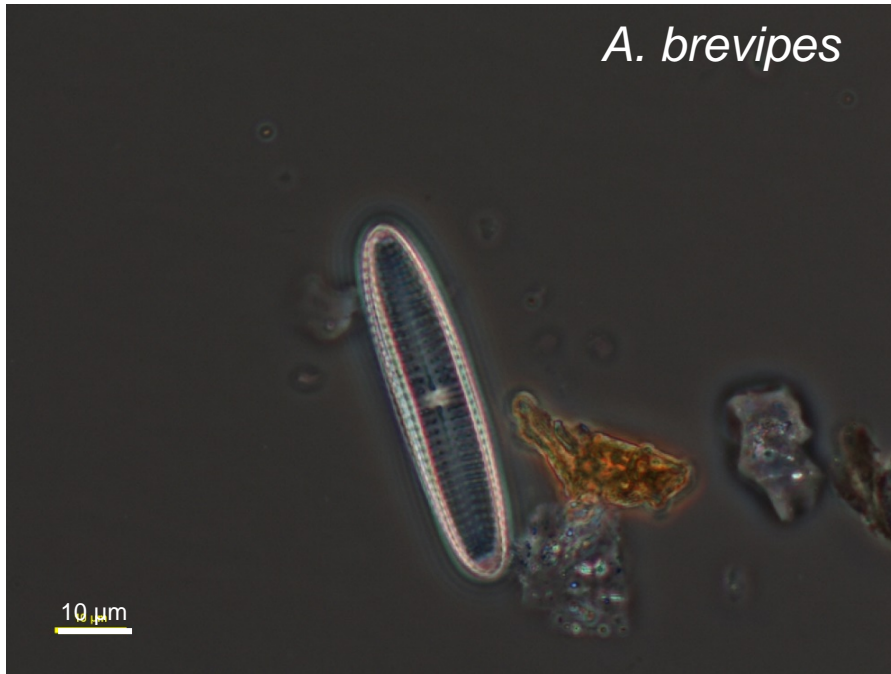
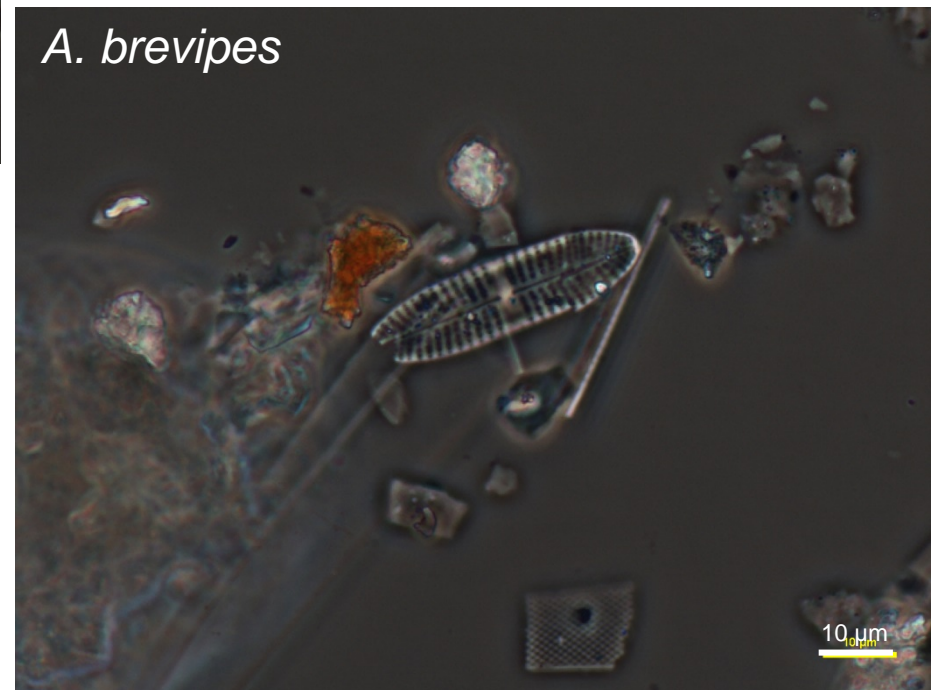


Achnantes

Antarctic Peninsula

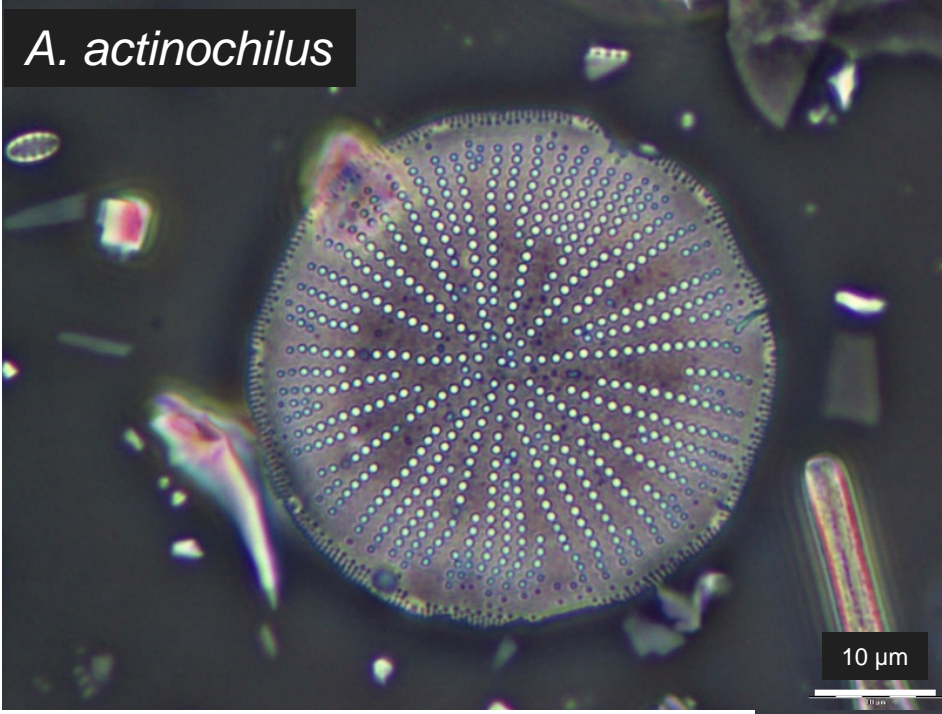


Antarctic Peninsula



Actinocyclus

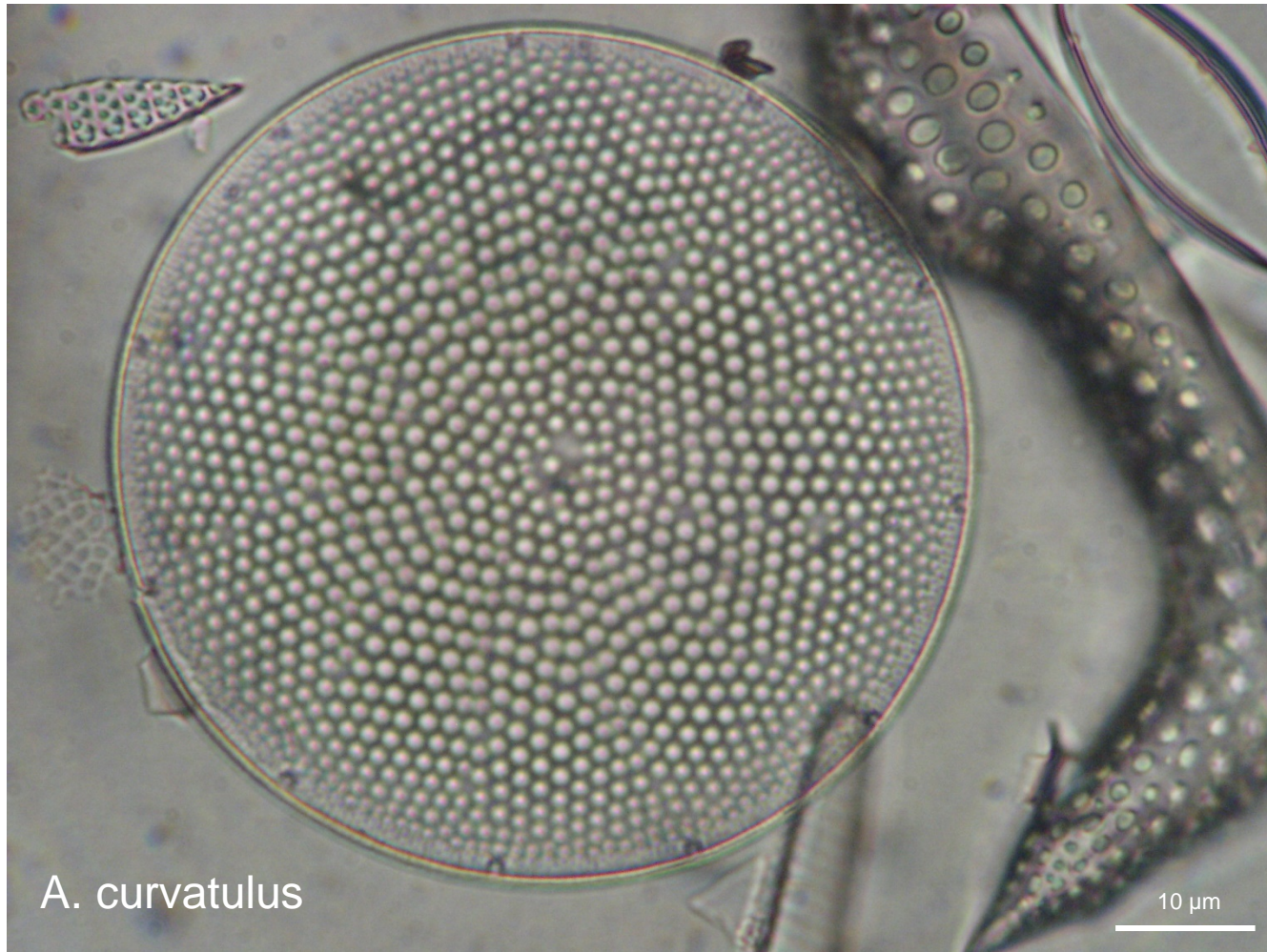
Adélie Land



Adélie Land



Actinocyclus



Amphora



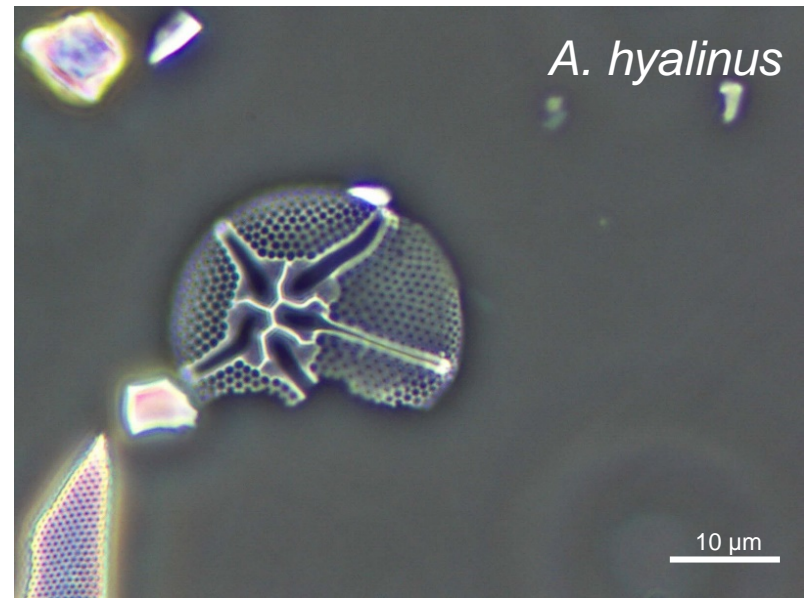
Antarctic Peninsula

Asteromphalus

Antarctic Peninsula

A. hyalinus

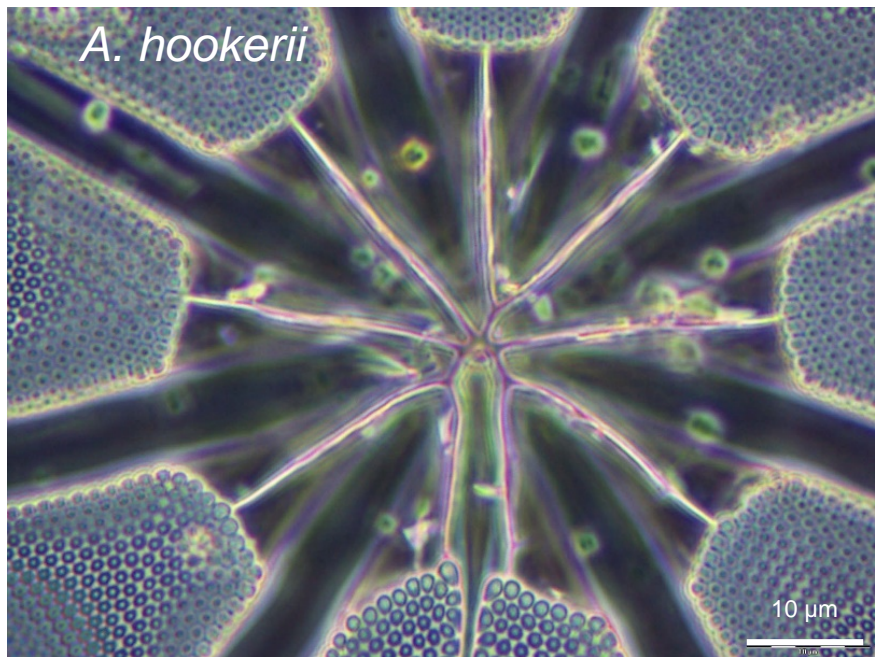
10 μ m



Adélie Land

A. hookerii

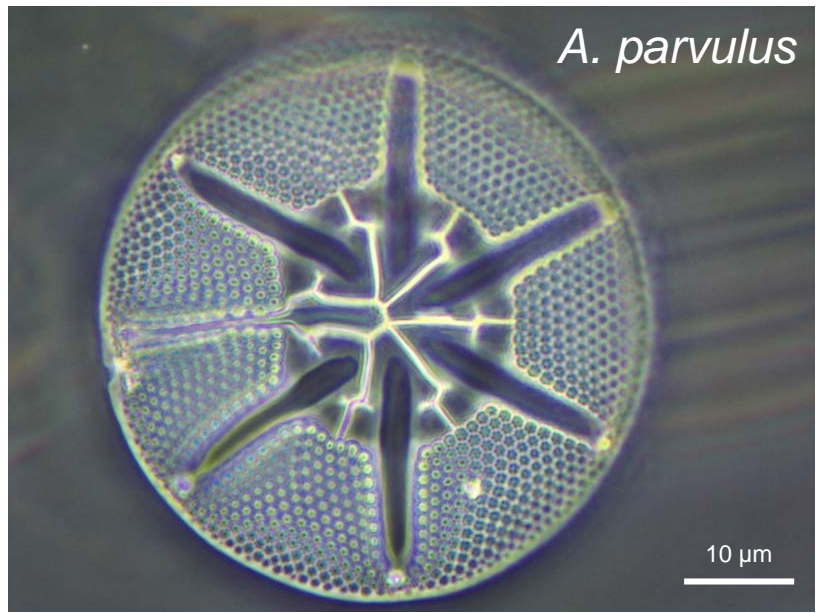
10 μ m



Adélie Land

A. parvulus

10 μ m



Azpeitia

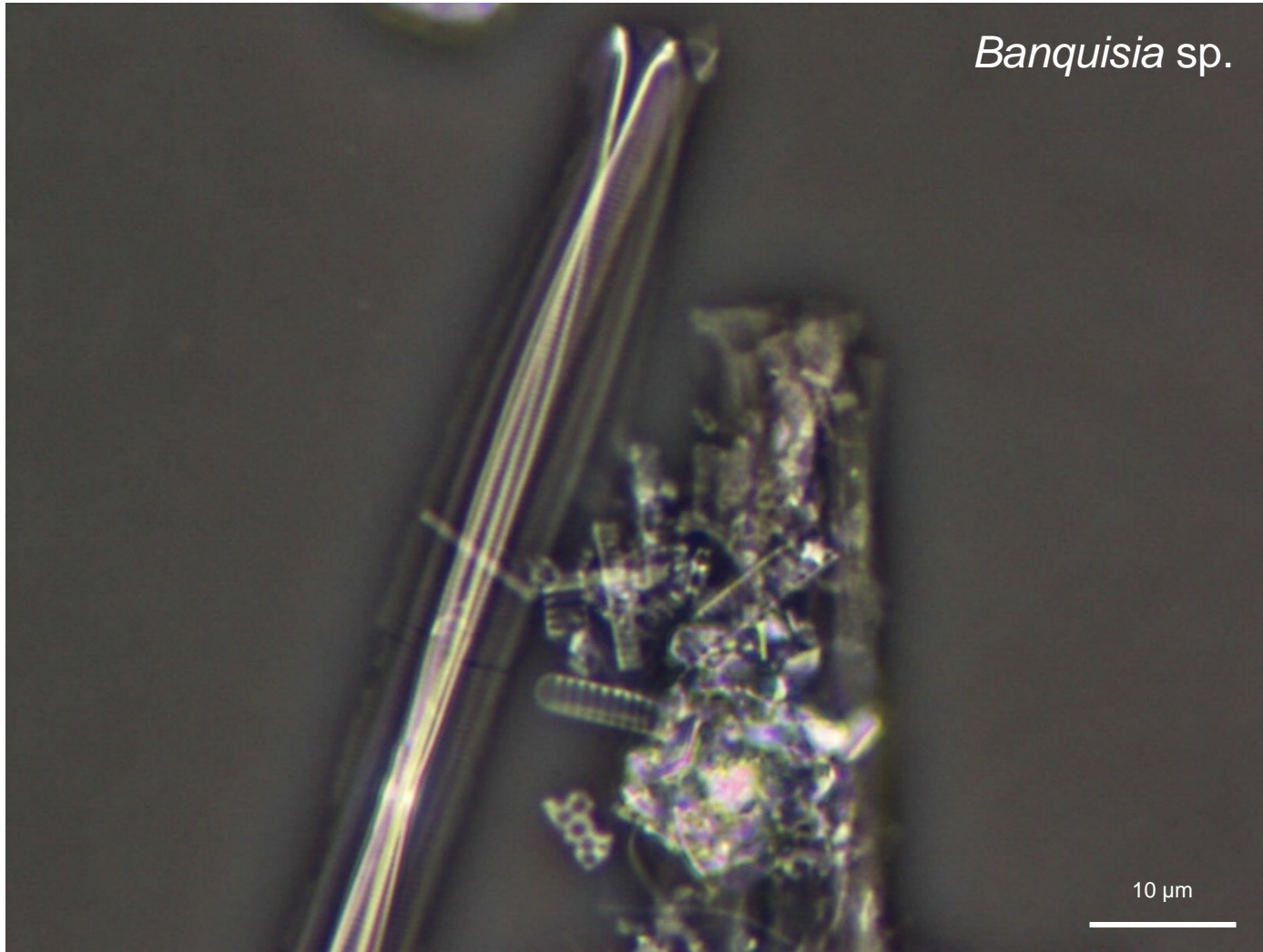
Adélie Land

A. tabularis

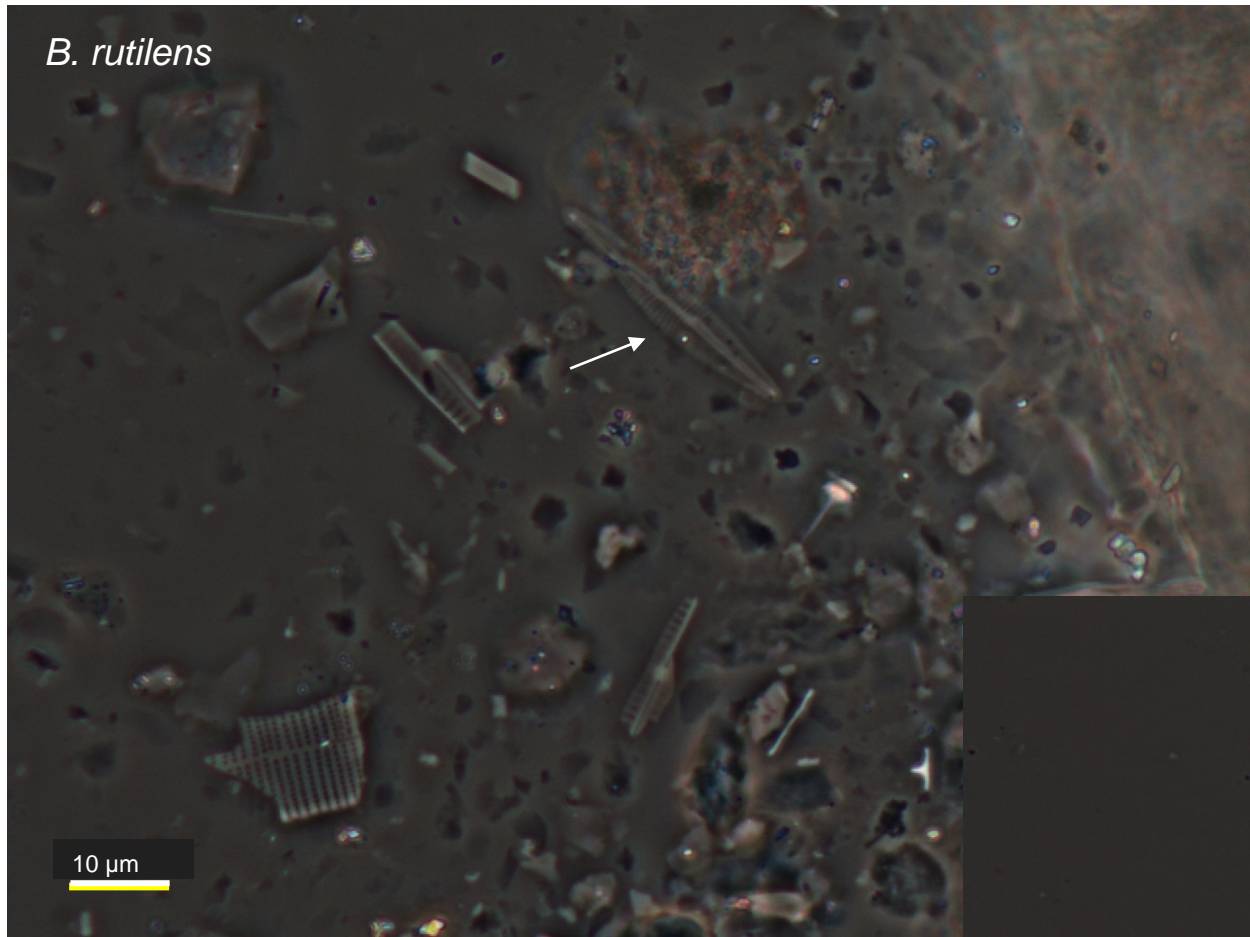


Banquisia

Antarctic Peninsula

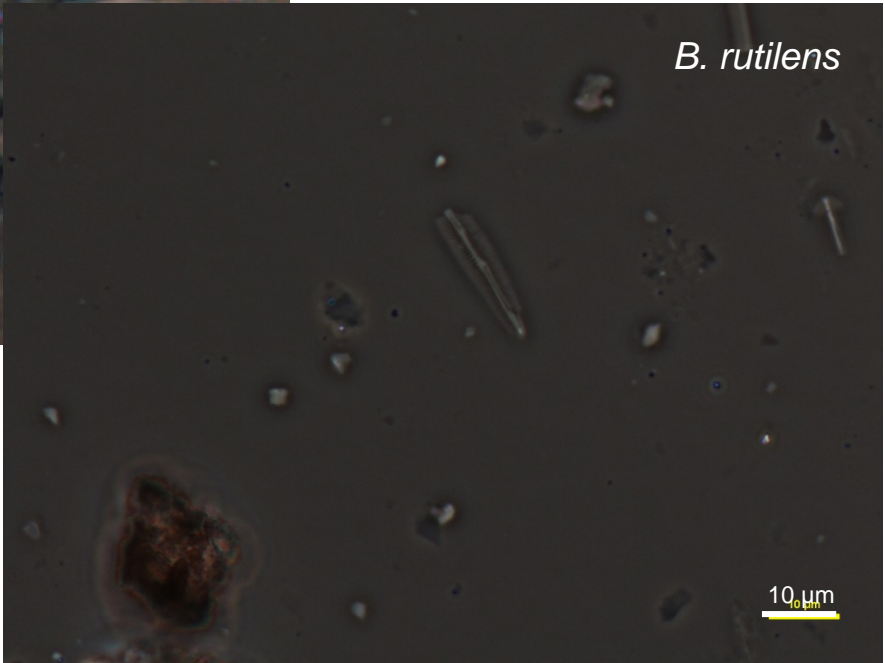


Berkeleya



Antarctic Peninsula

Antarctic Peninsula



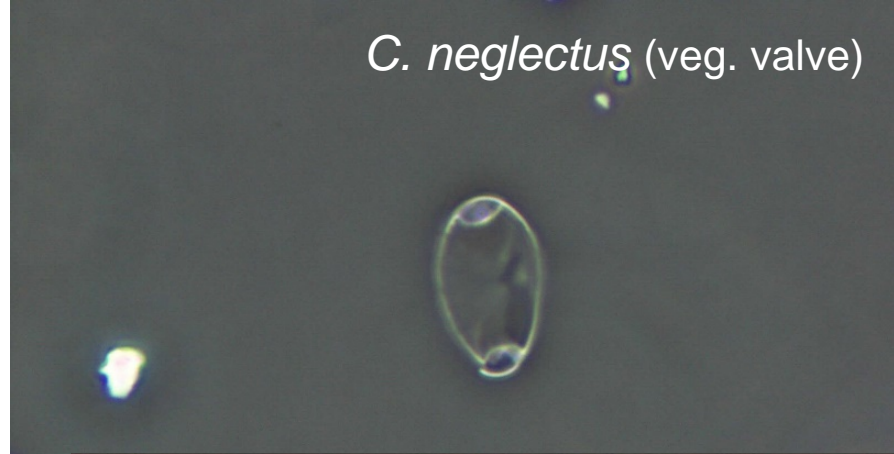
10 µm

Antarctic Peninsula

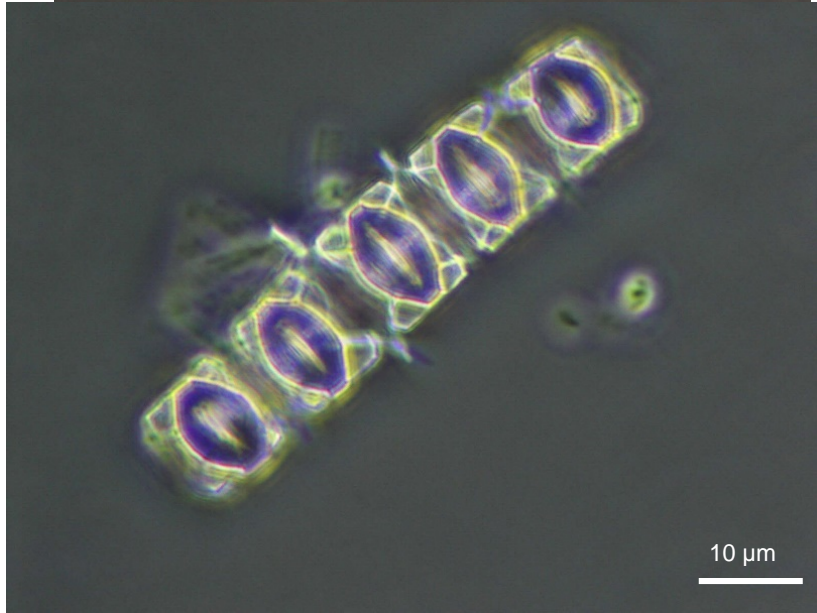
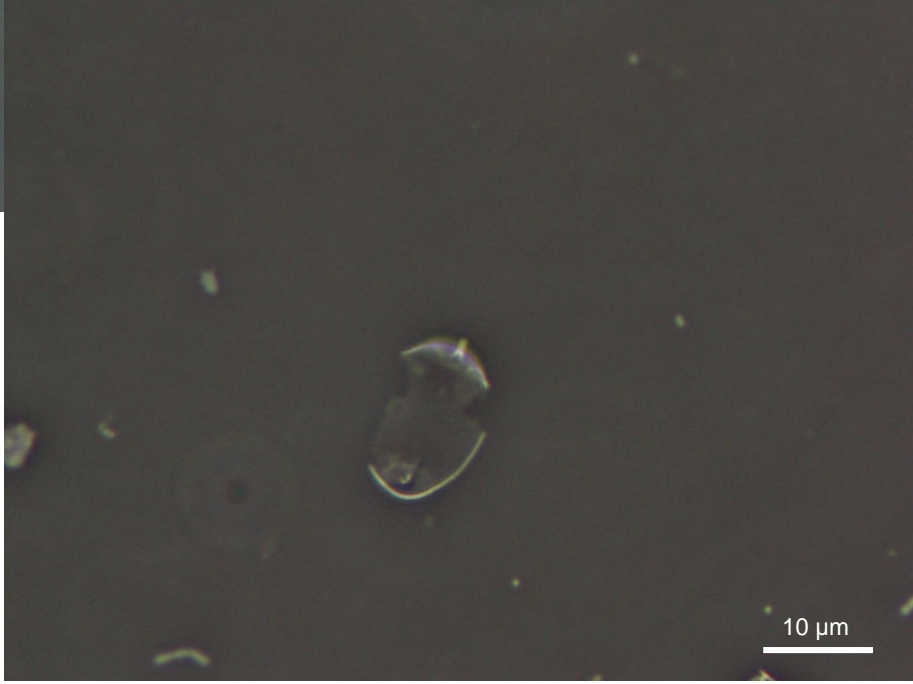
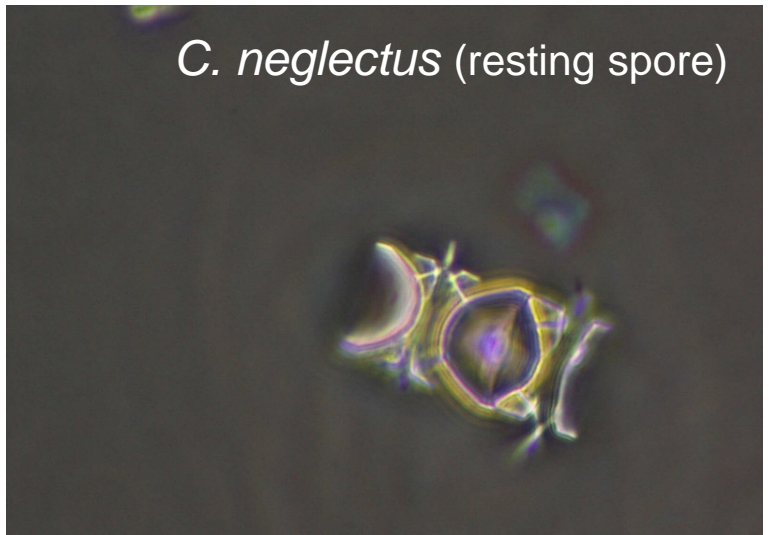
Chaetoceros (section Hyalochaete)

Antarctic Peninsula

C. neglectus (veg. valve)



C. neglectus (resting spore)



Antarctic Peninsula

Chaetoceros (section Phaeoceros)

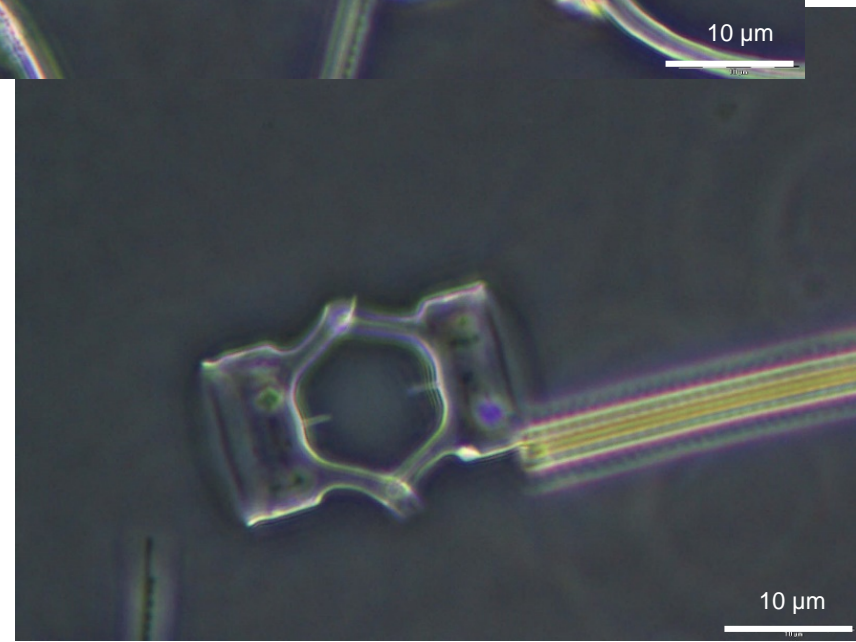
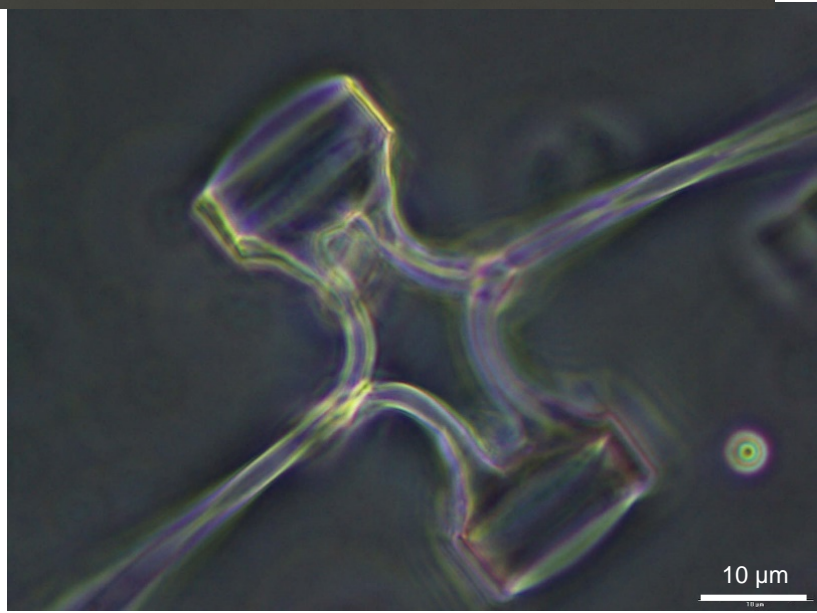
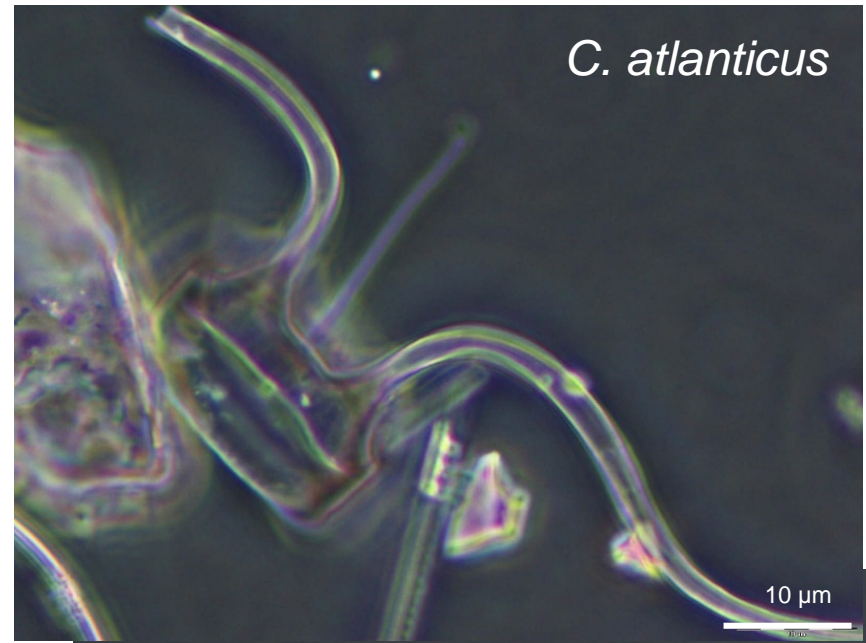
Adélie Land

C. dichchaeta



Adélie Land

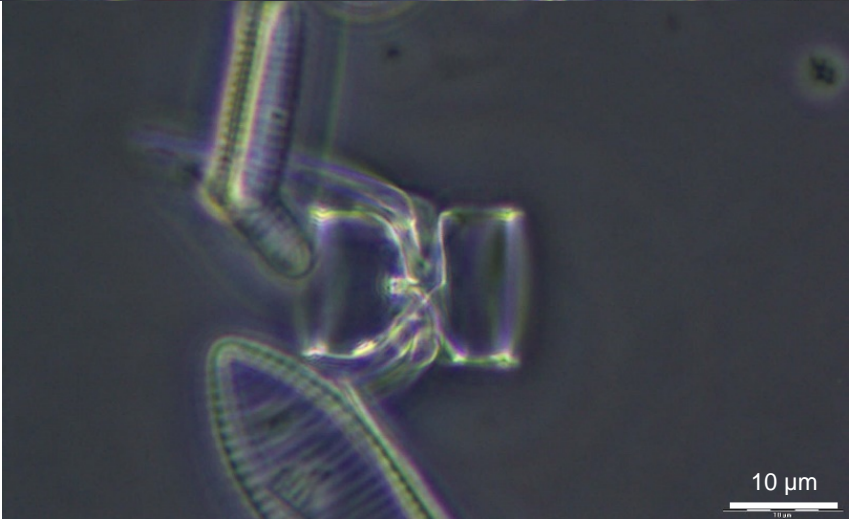
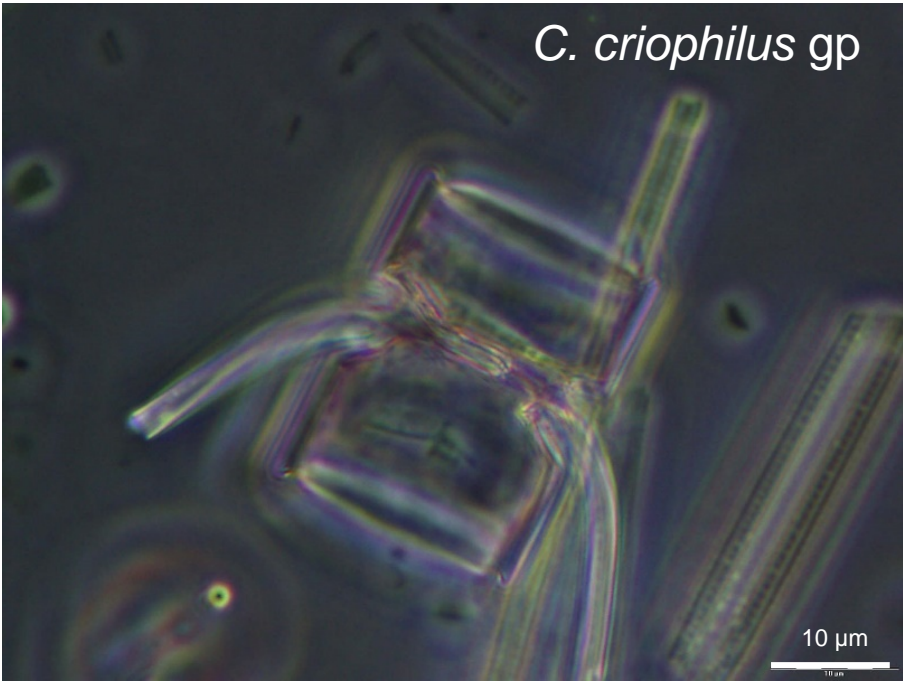
C. atlanticus



Chaetoceros (section Phaeoceros)

Adélie Land

C. criophilus gp



Adélie Land

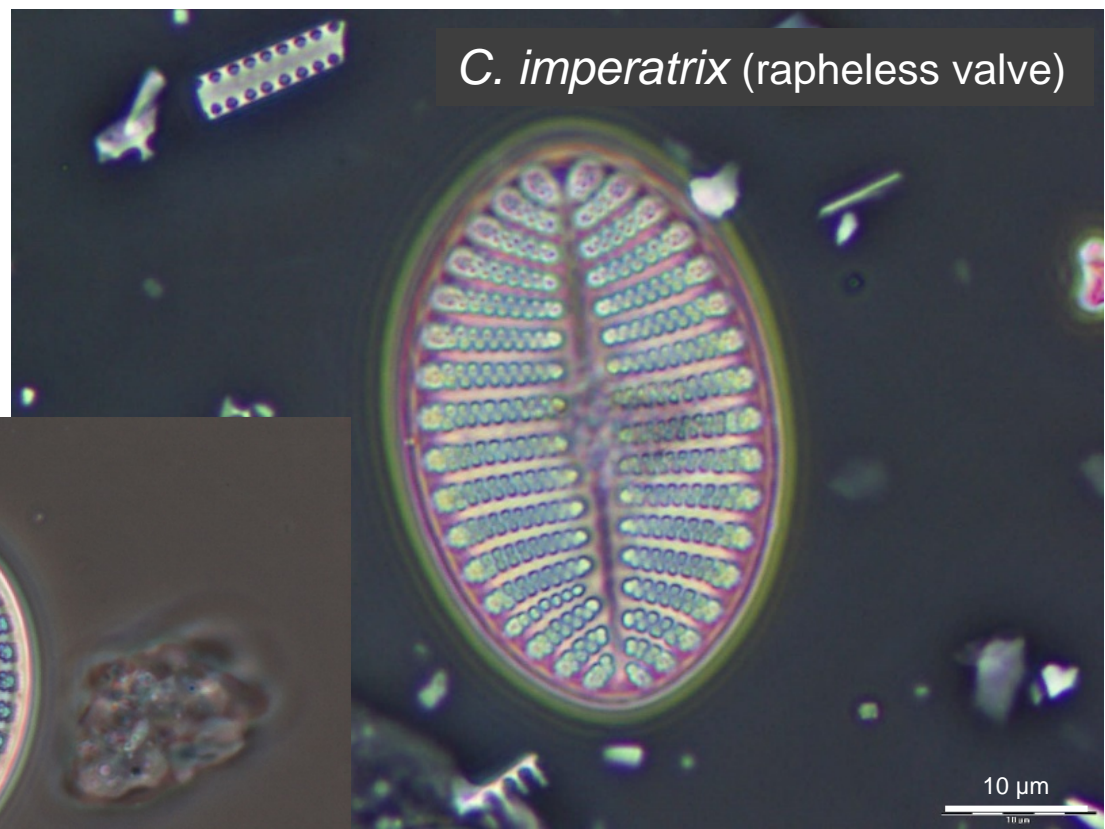
C. bulbosum



Cocconeis

Antarctic Peninsula

C. imperatrix (rapheless valve)



C. imperatrix (raphe valve)



Cocconeis

C. fasciolata (rapheless valve)



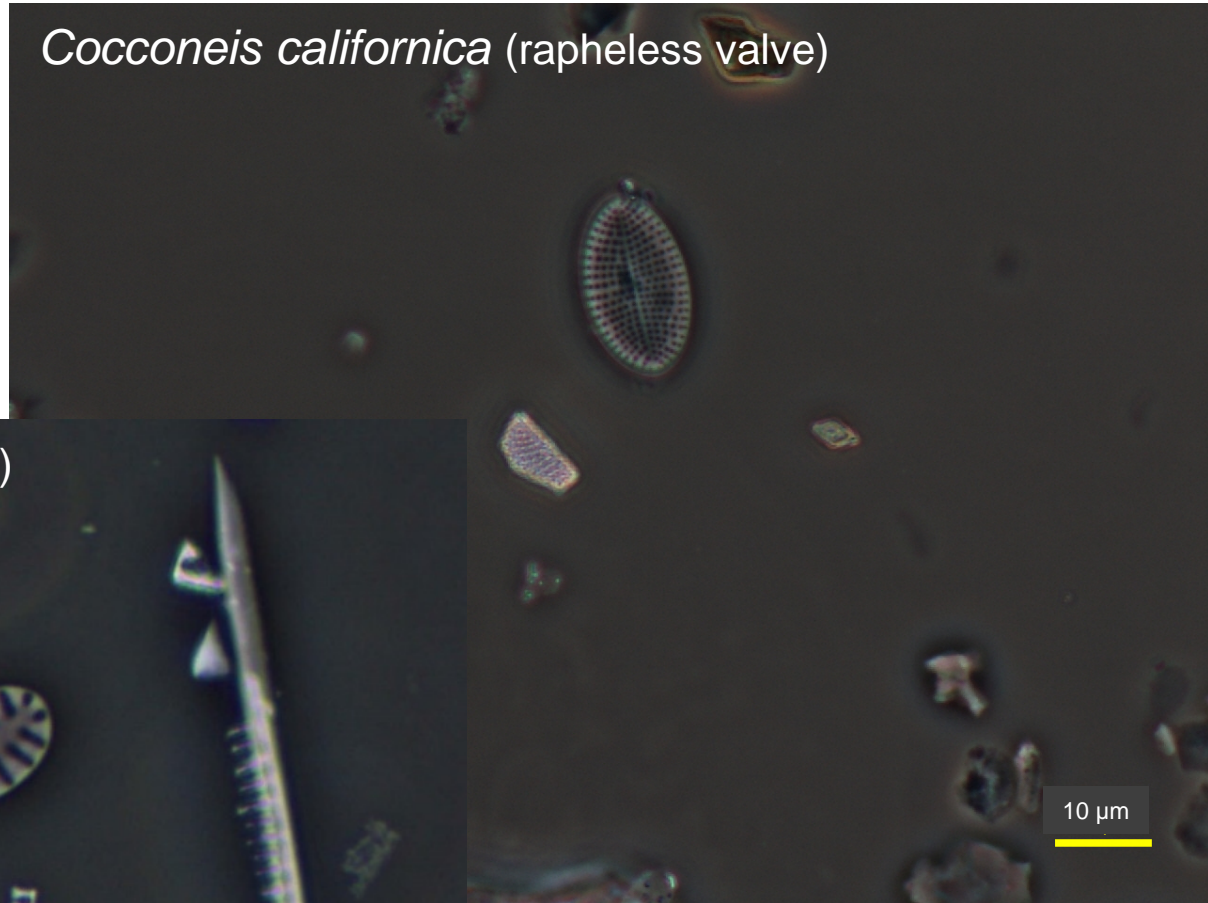
C. fasciolata (raphe valve)



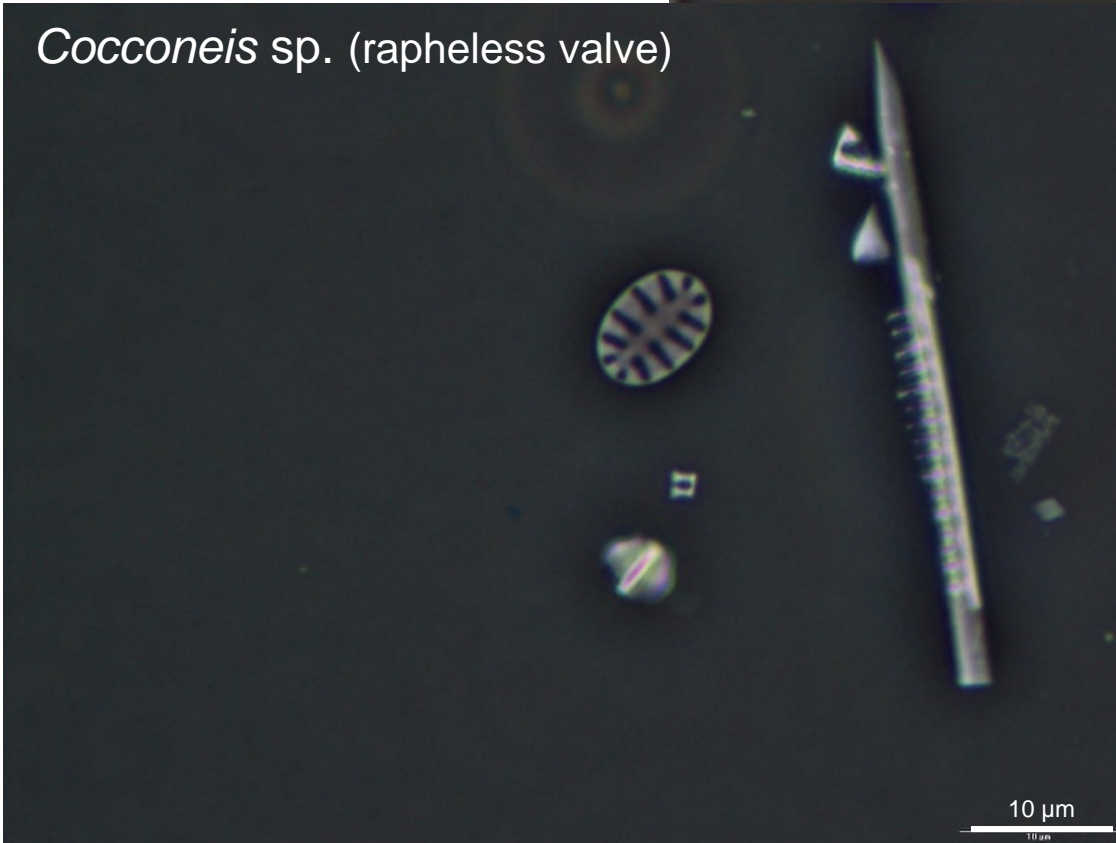
Antarctic Peninsula

Cocconeis

Cocconeis californica (rapheless valve)

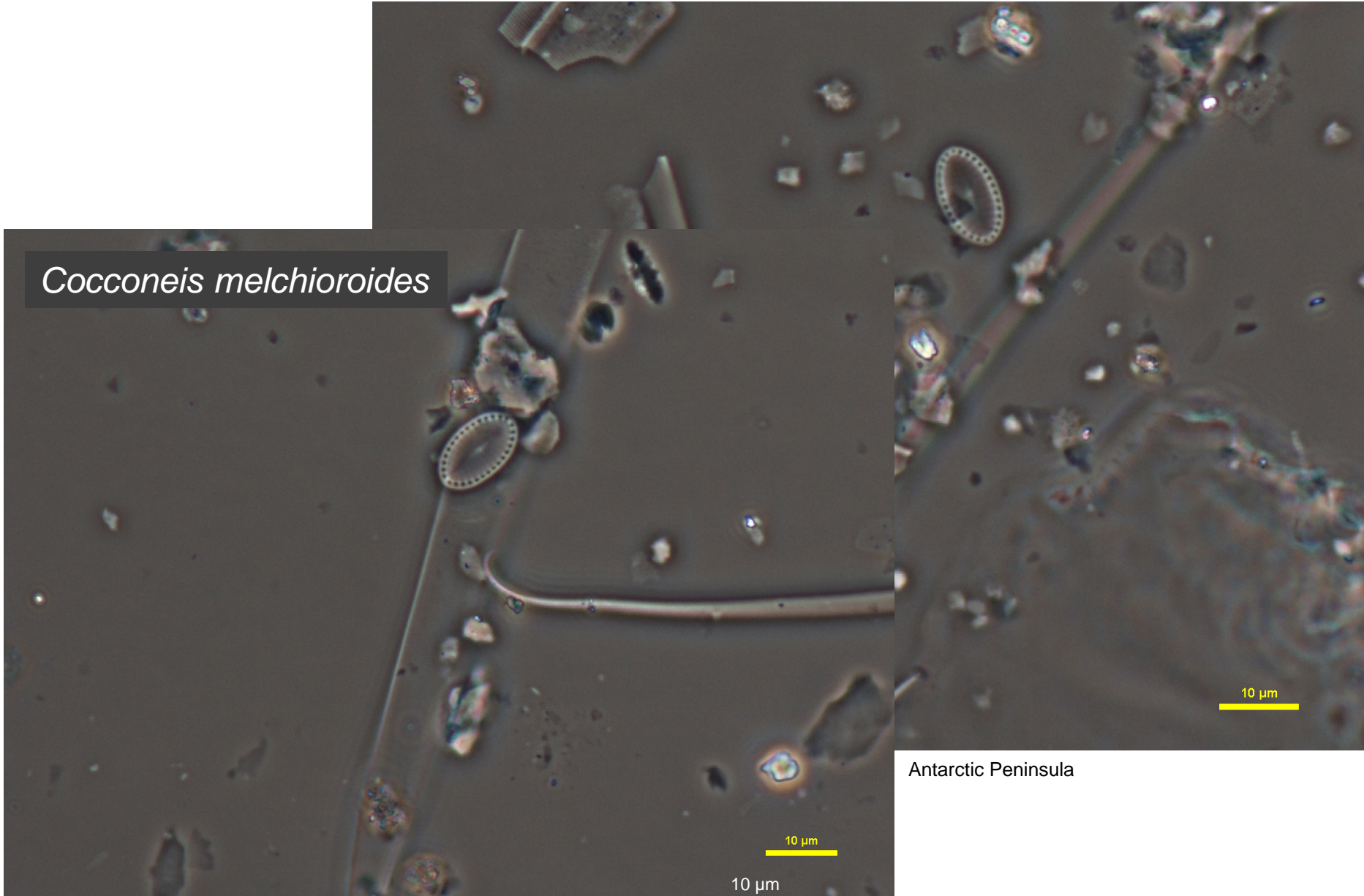


Cocconeis sp. (rapheless valve)



Antarctic Peninsula

Cocconeis



Cocconeis melchioroides

Antarctic Peninsula

Cocconeis

Cocconeis sp.

Cocconeis schuetti

Antarctic Peninsula

10 μ m

10 μ m

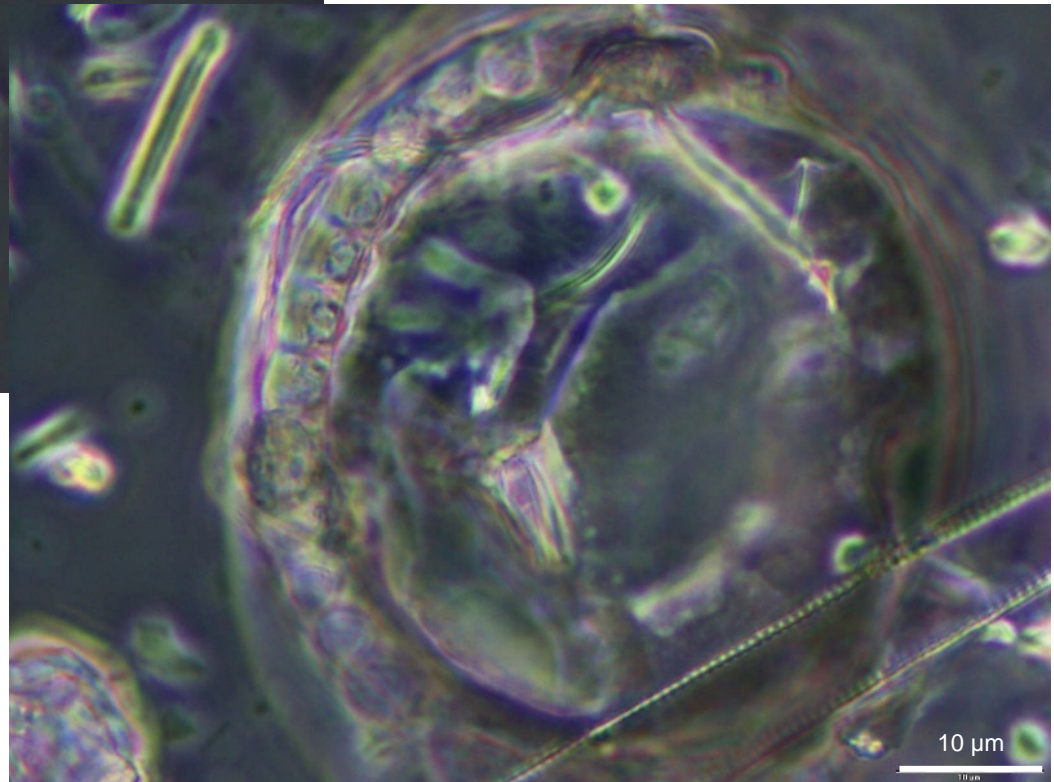


Corethron

Adélie Land

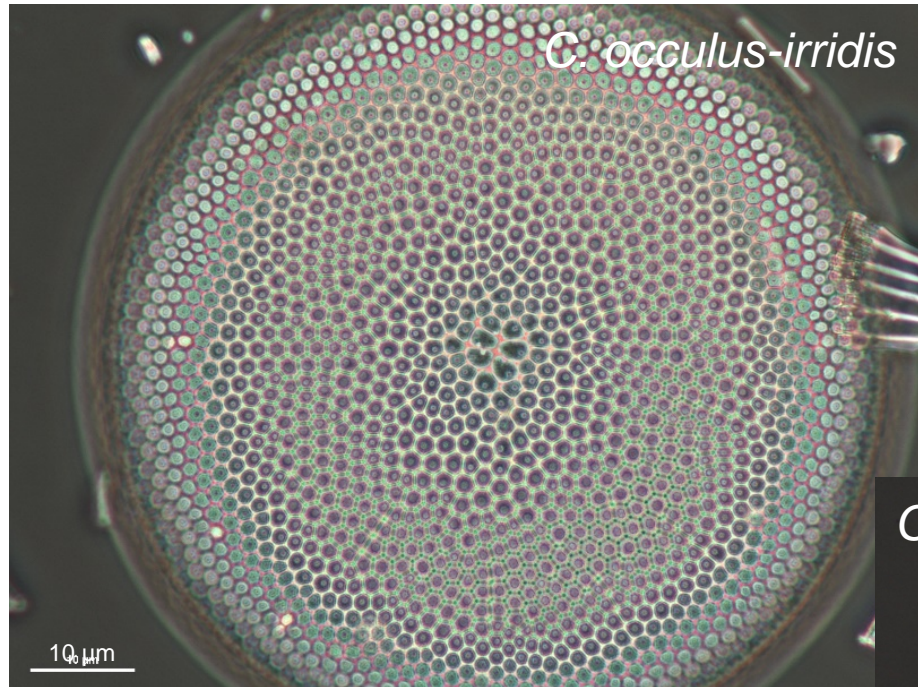


Antarctic Peninsula

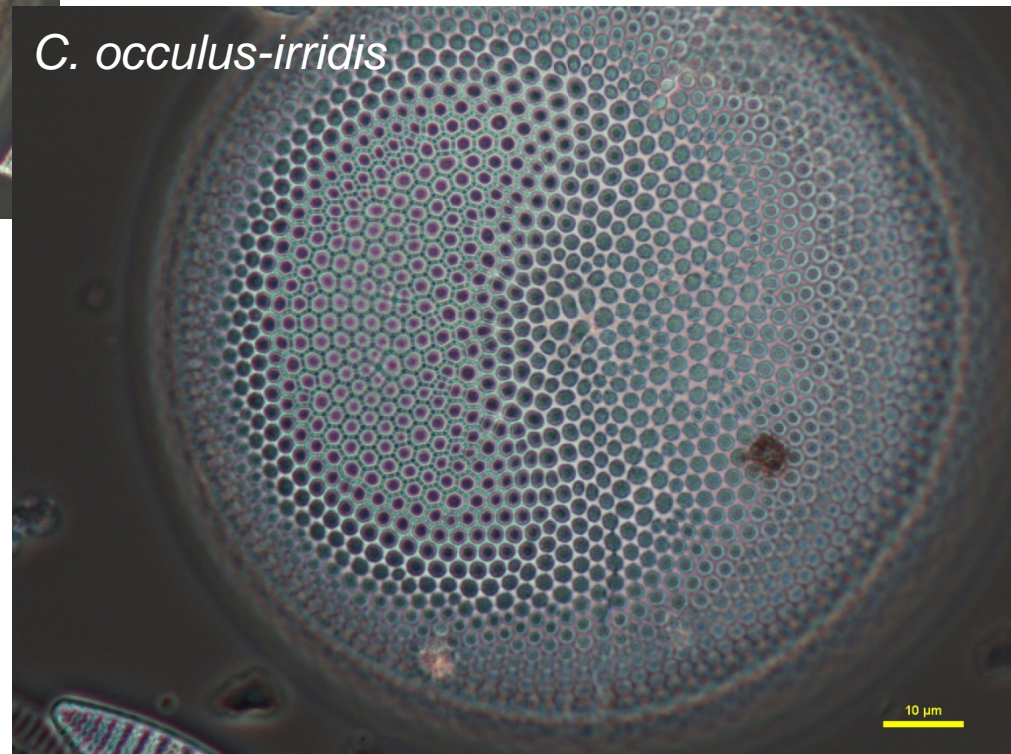


Coscinodiscus

Adélie Land



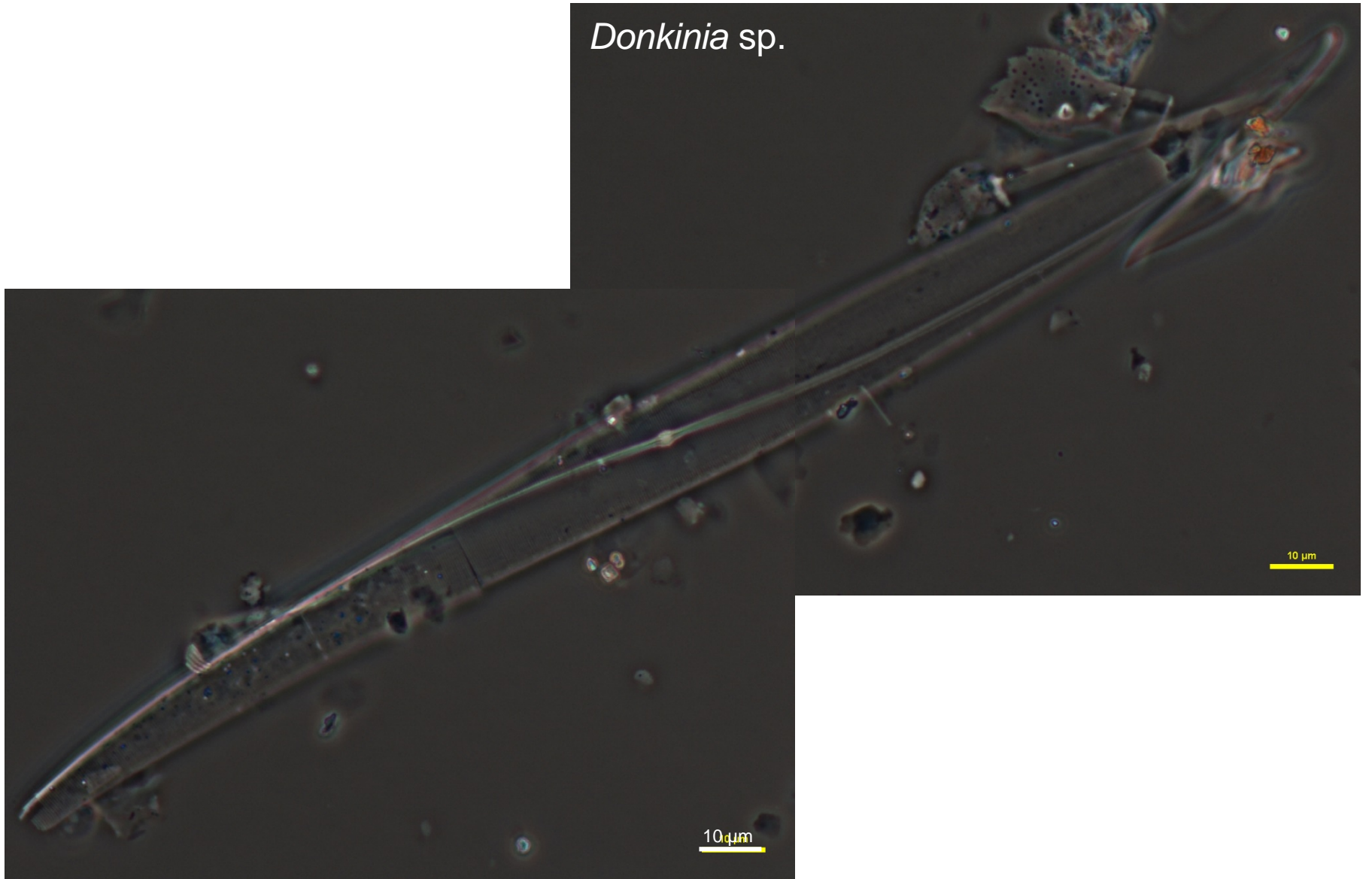
Antarctic Peninsula



Donkinia

Antarctic Peninsula

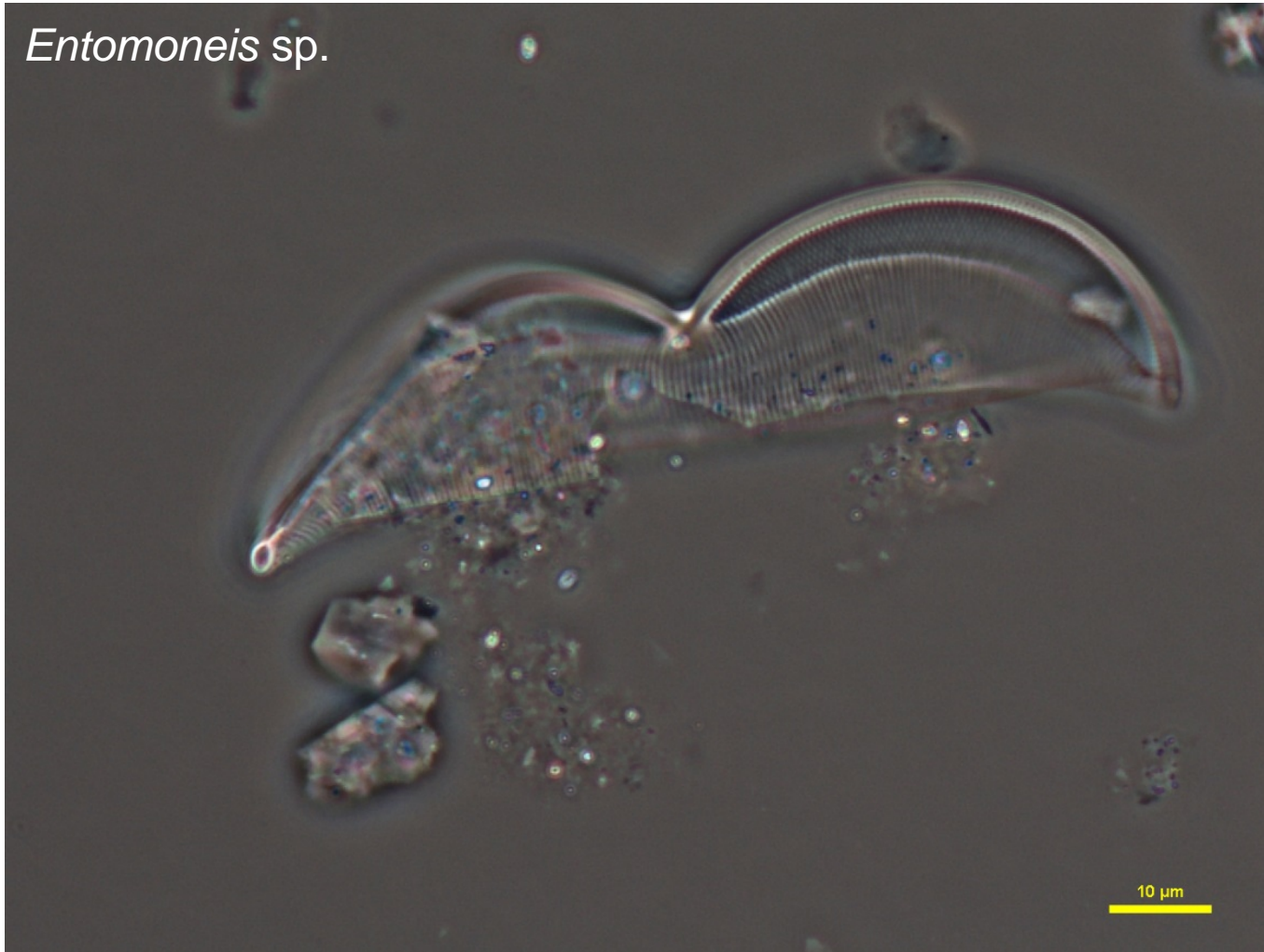
Donkinia sp.



Entomoneis

Antarctic Peninsula

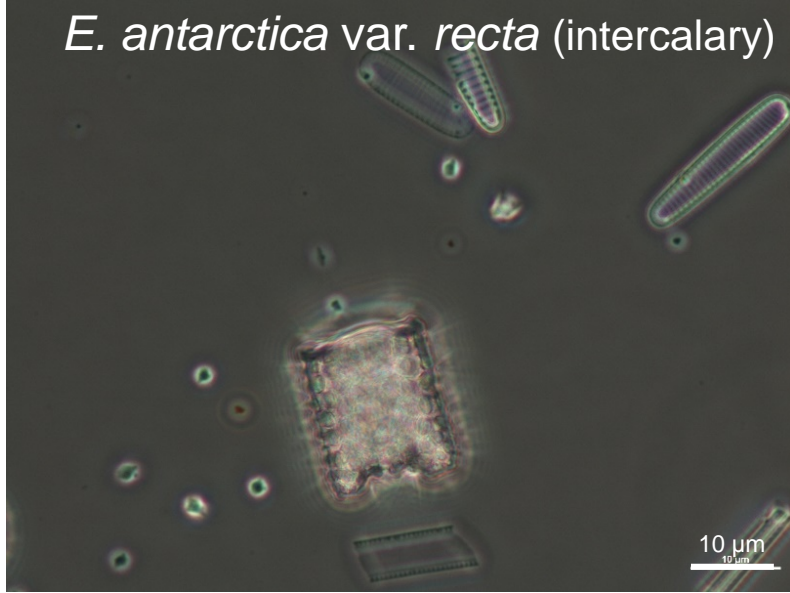
Entomoneis sp.



Eucampia

Adélie Land

E. antarctica var. *recta* (intercalary)



Adélie Land

E. antarctica (valve view)



Adélie Land

E. antarctica var. *recta* (terminal)



Antarctic Peninsula

E. antarctica var. *recta* (vegetative)



Fragilaria

Antarctic Peninsula

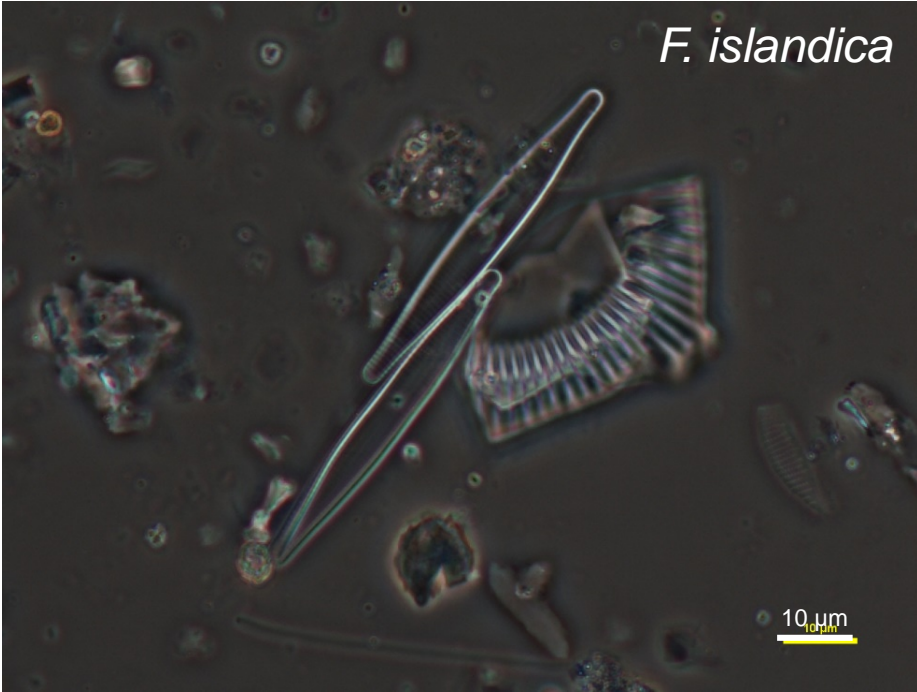
F. islandica

10 μ m

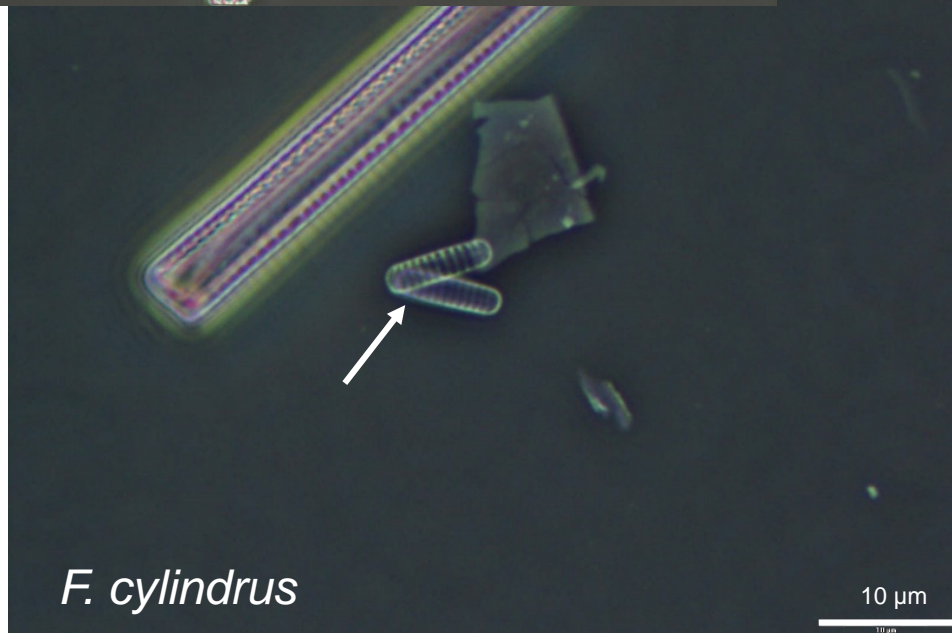
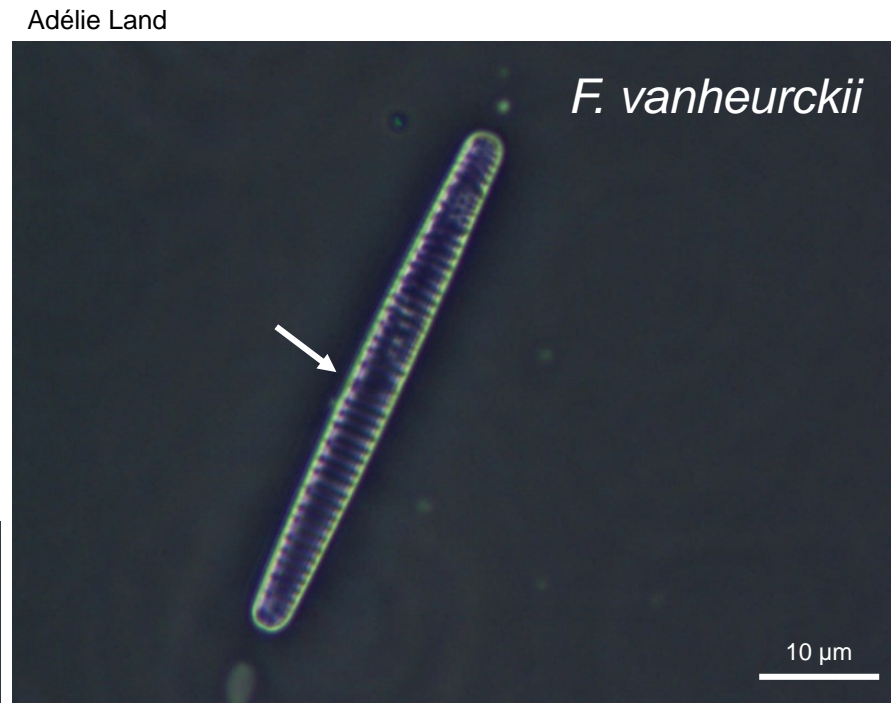
Antarctic Peninsula

F. striatula

10 μ m



Fragilariopsis

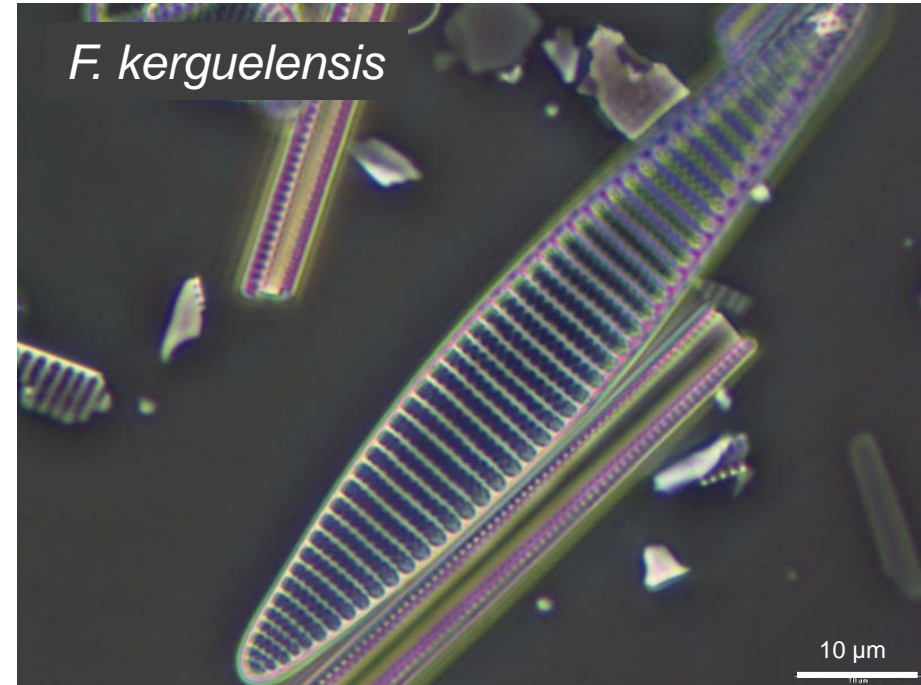


Fragilariopsis

Adélie Land



Adélie Land



Adélie Land

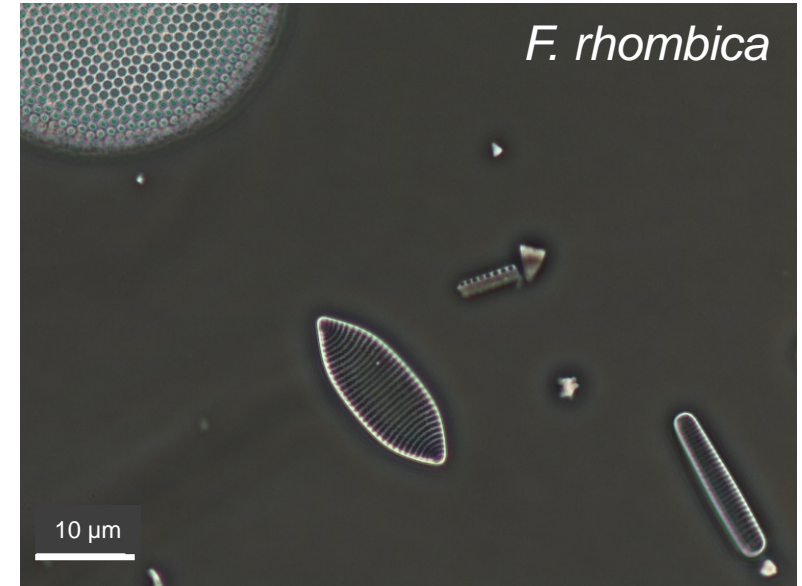


Fragilariopsis

Adélie Land



Adélie Land



F. separanda

Adélie Land



Fragilariopsis

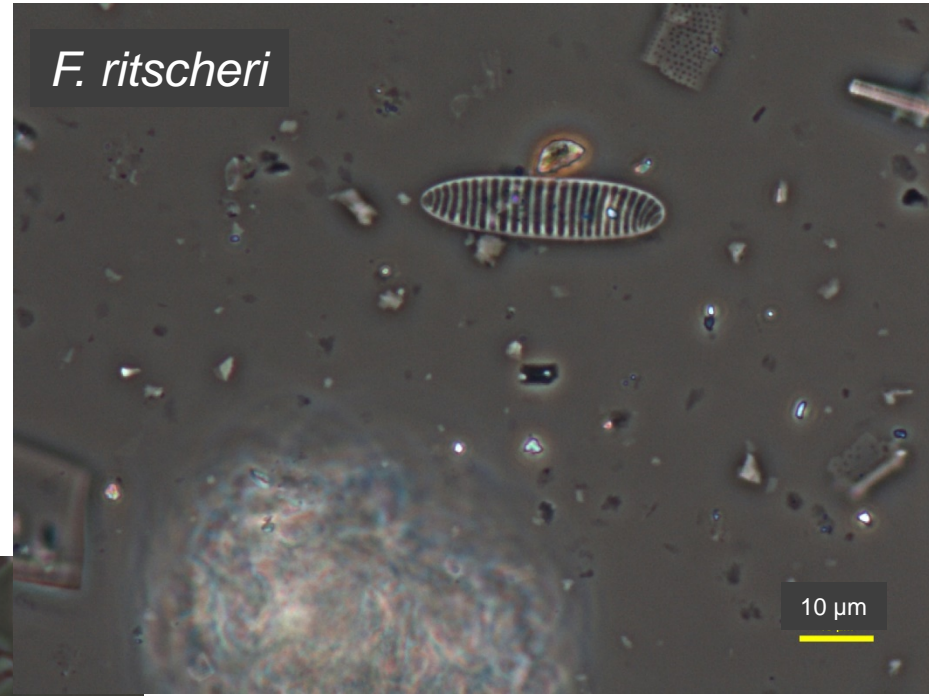
Adélie Land

F. ritscheri



10 μm

F. ritscheri



10 μm

Antarctic Peninsula

Adélie Land

F. ritscheri



10 μm

Fragilariopsis

Adélie Land

F. sublinearis

Antarctic Peninsula



Fragilariopsis

Adélie Land

F. obliquecostata



F. obliquecostata



F. obliquecostata



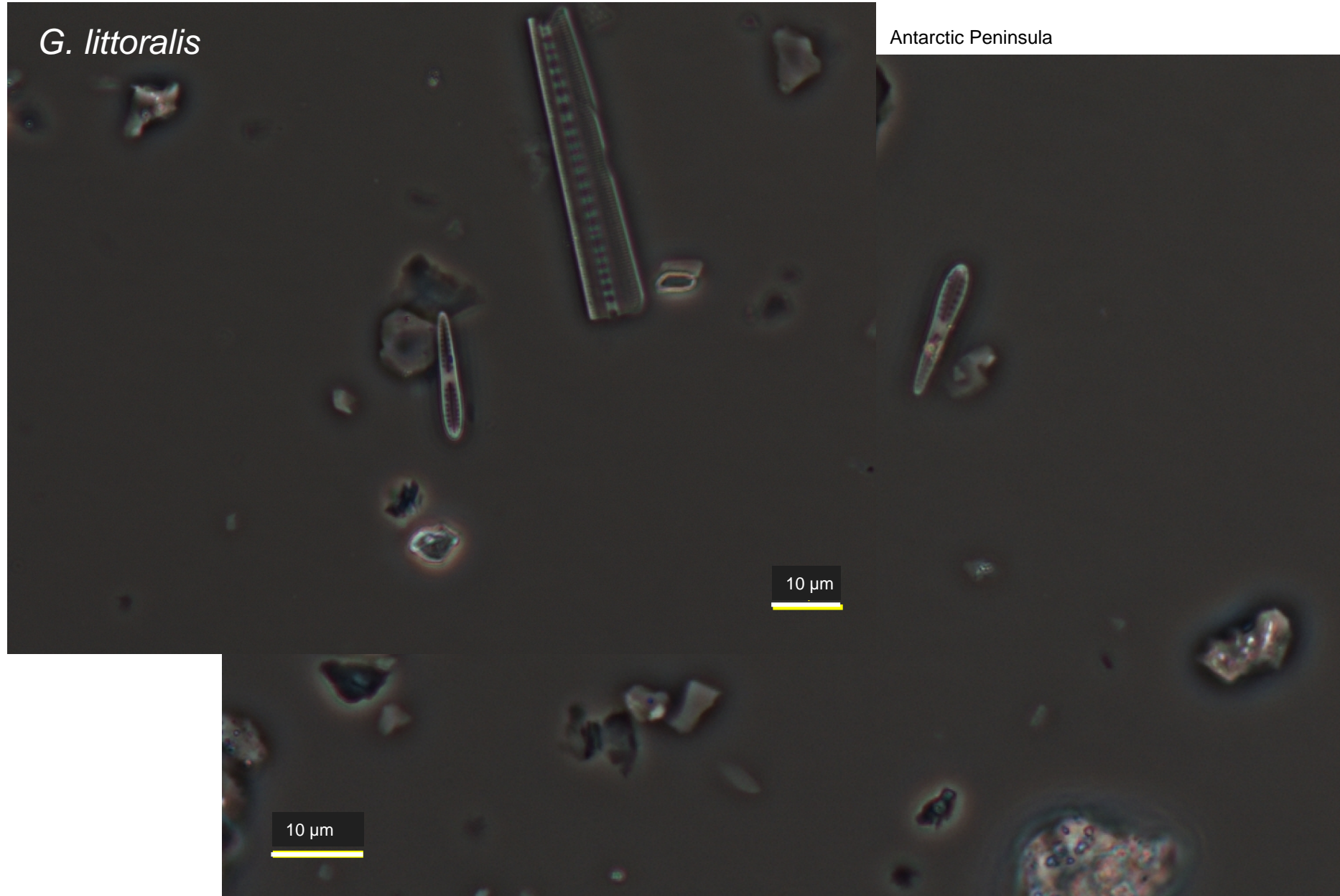
Gomphonemopsis

G. littoralis

Antarctic Peninsula

10 μ m

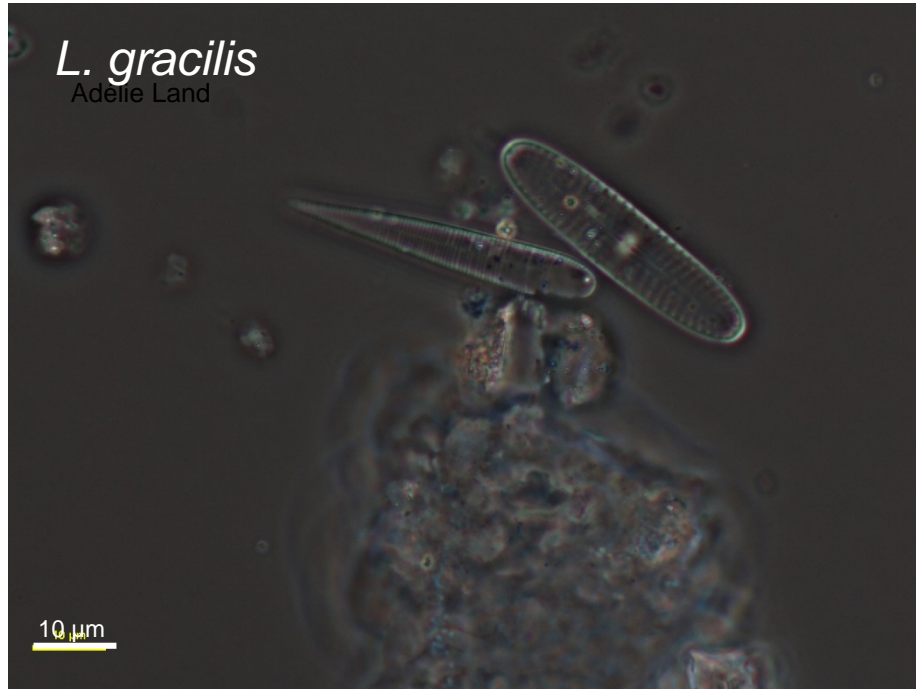
10 μ m



Licmophora

L. gracilis

Adelie Land



L. gracilis (girdle view)



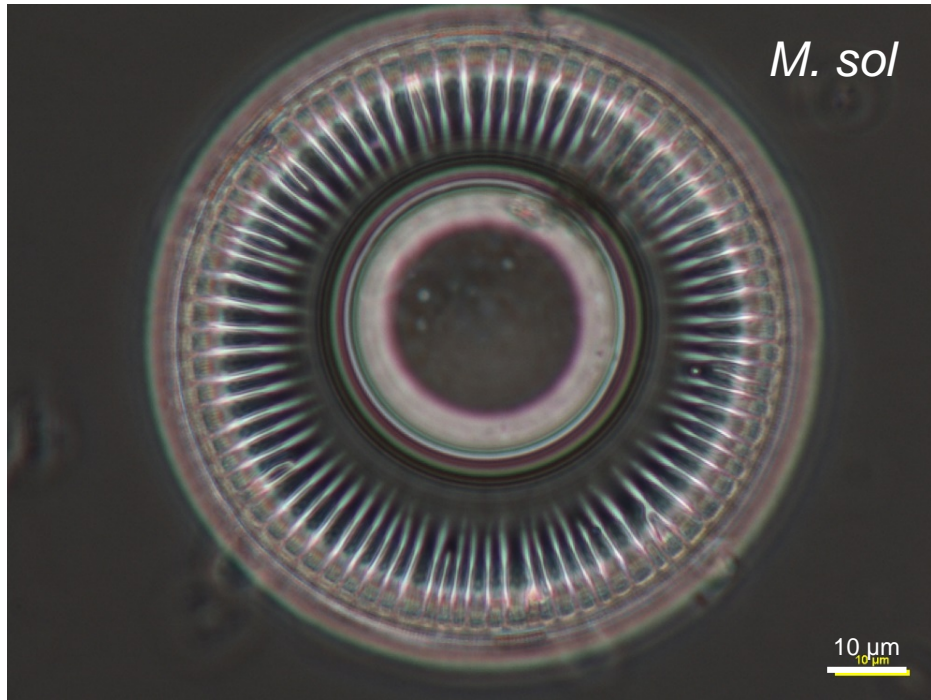
Antarctic Peninsula

L. decora

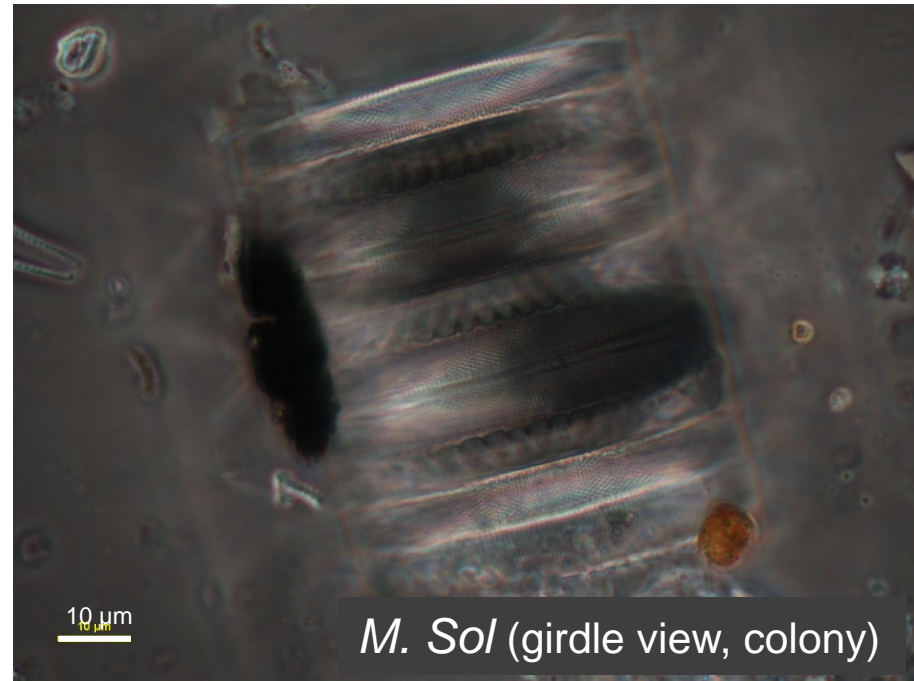


Melosira

Adélie Land

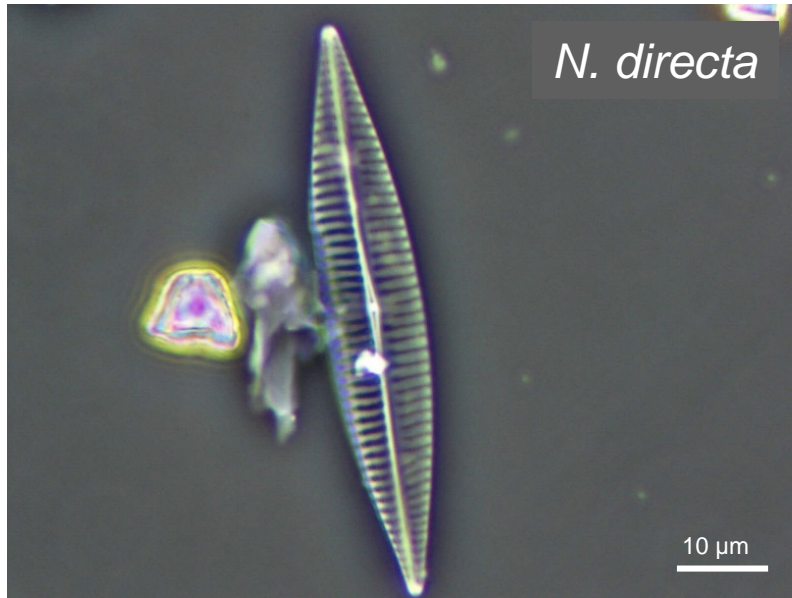


Antarctic Peninsula

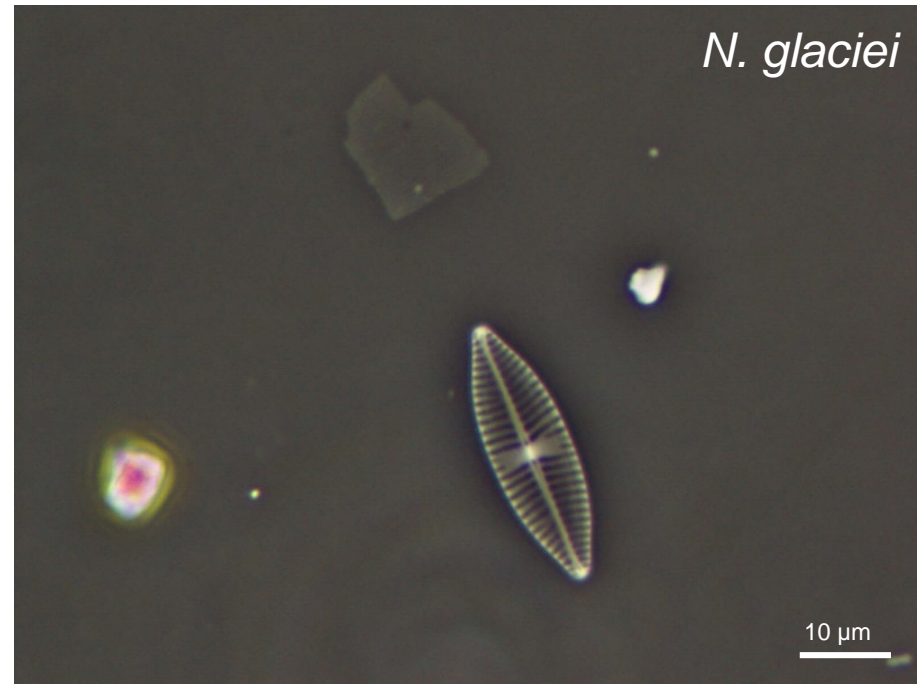


Navicula

Antarctic Peninsula

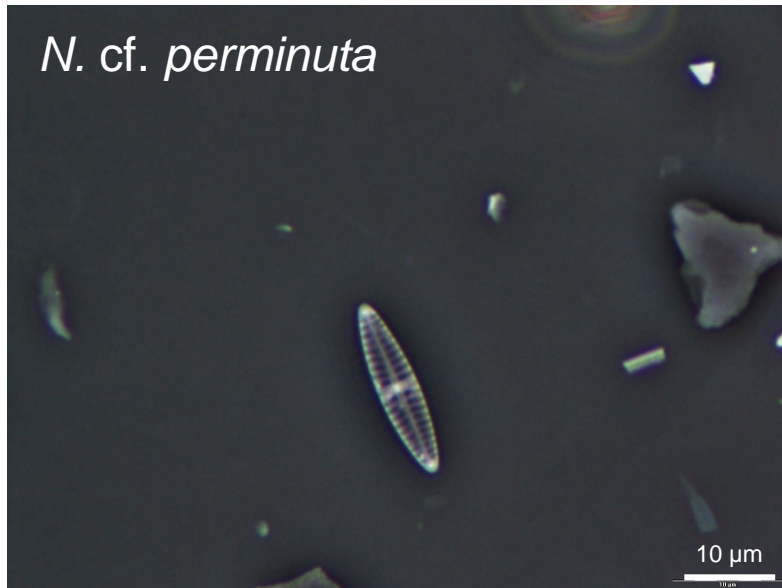


Antarctic Peninsula



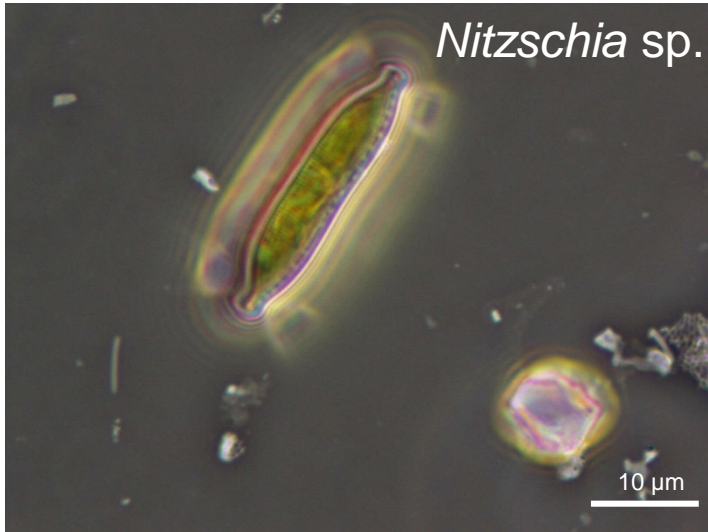
N. cf. perminuta

Antarctic Peninsula

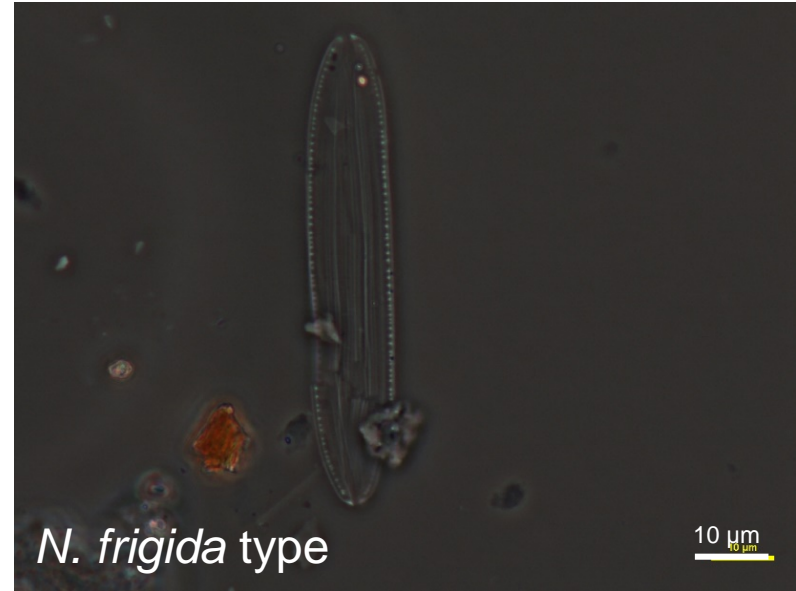


Nitzschia

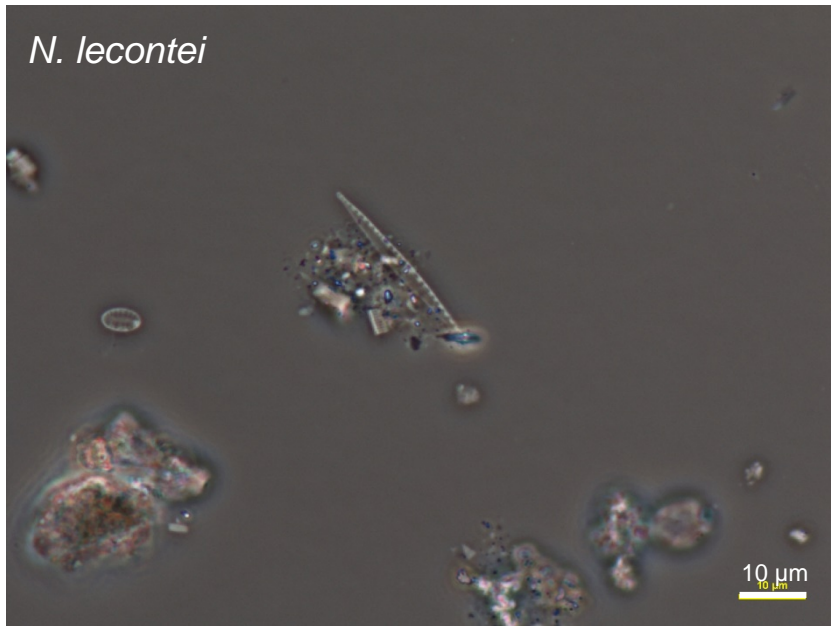
Antarctic Peninsula



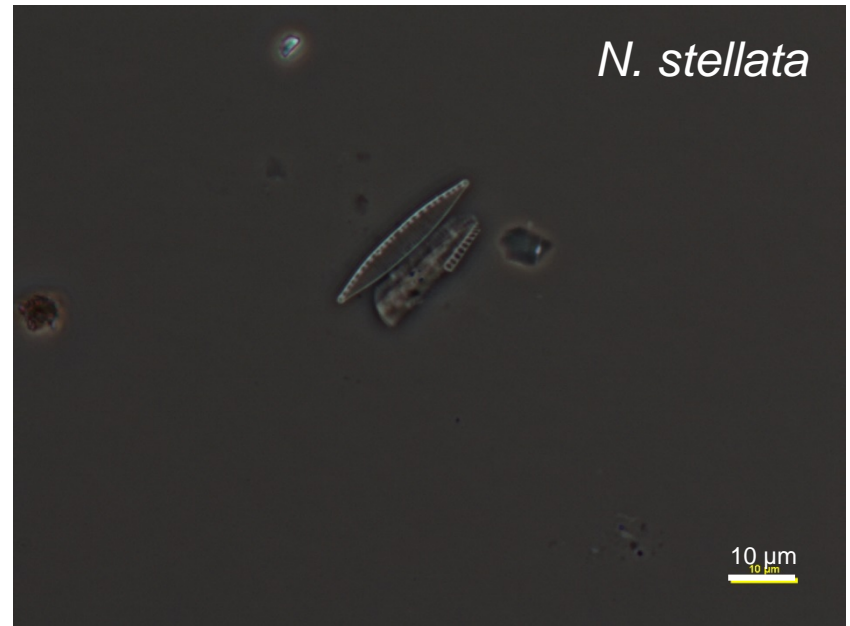
Antarctic Peninsula



Antarctic Peninsula

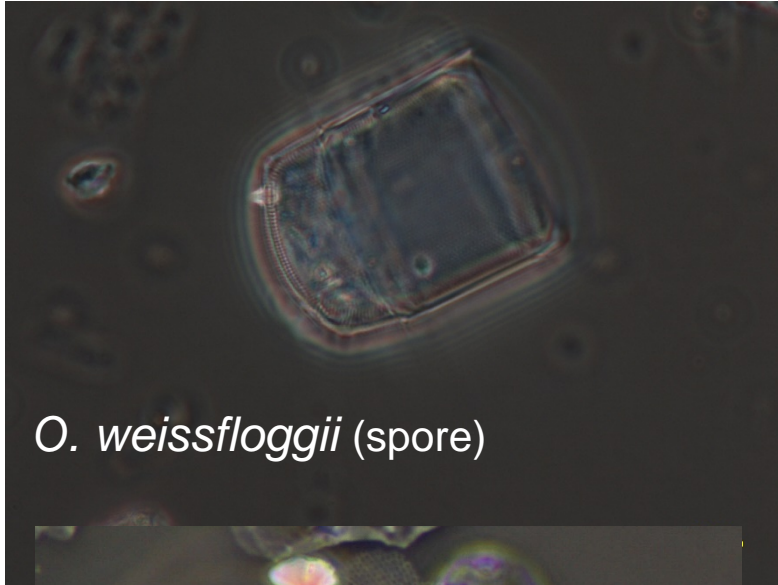


Antarctic Peninsula



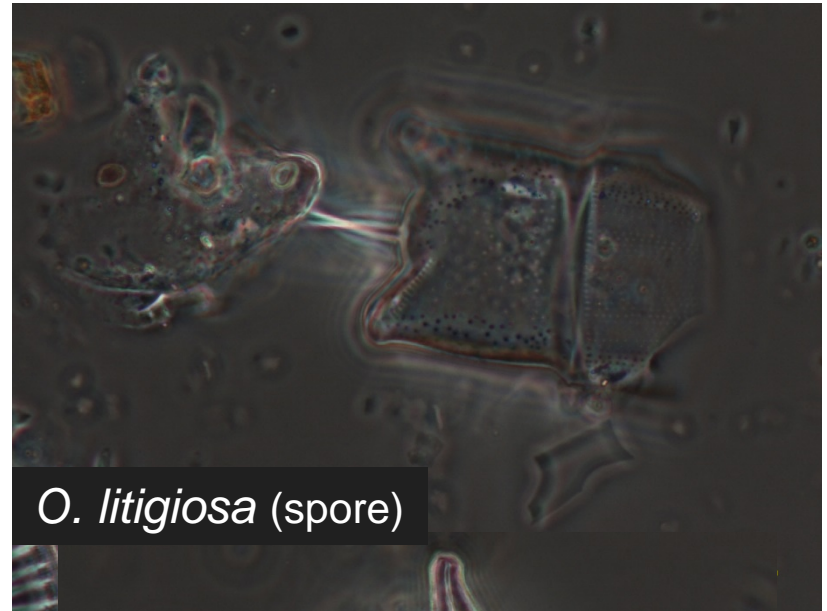
Odontella

Antarctic Peninsula

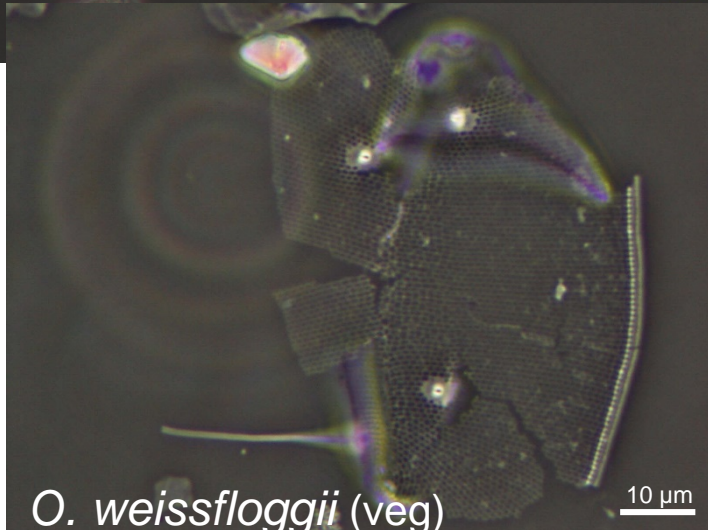


O. weissfloggii (spore)

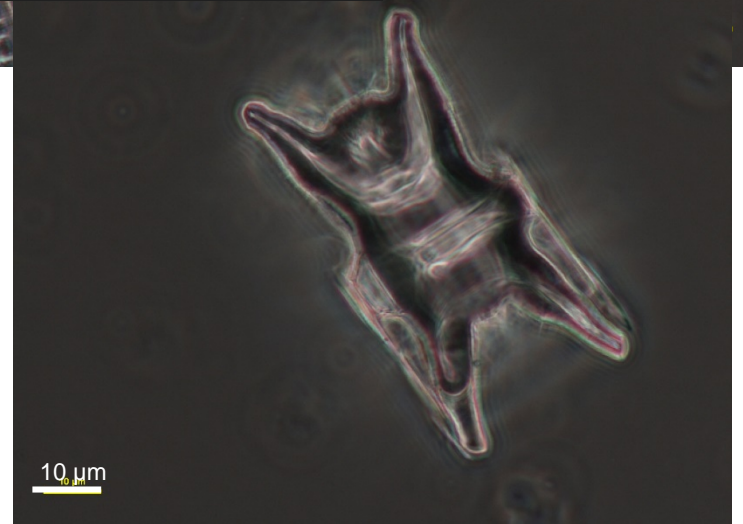
Antarctic Peninsula



O. litigiosa (spore)



O. weissfloggii (veg)

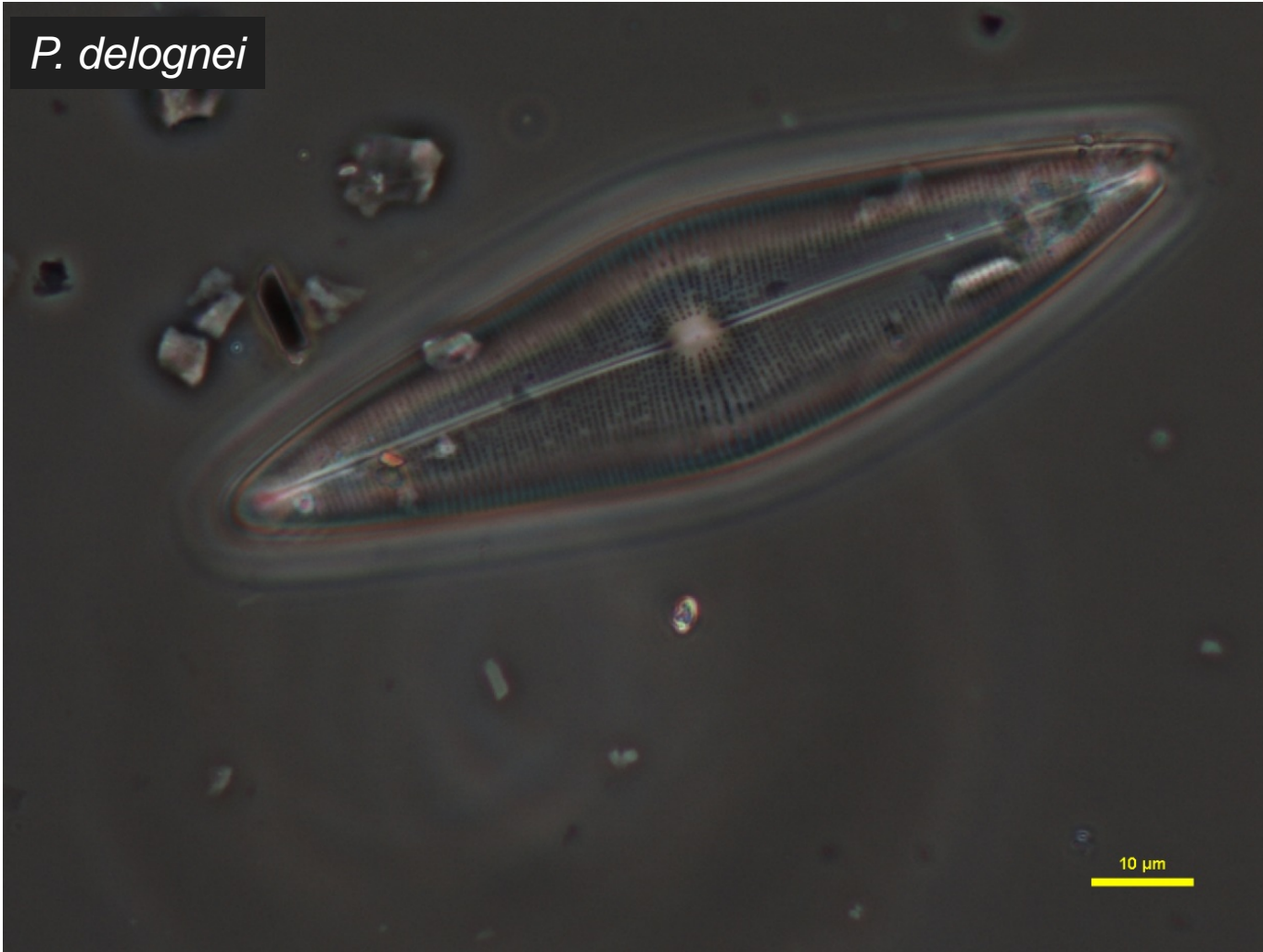


10 μm

Parlibellus

Antarctic Peninsula

P. delognei



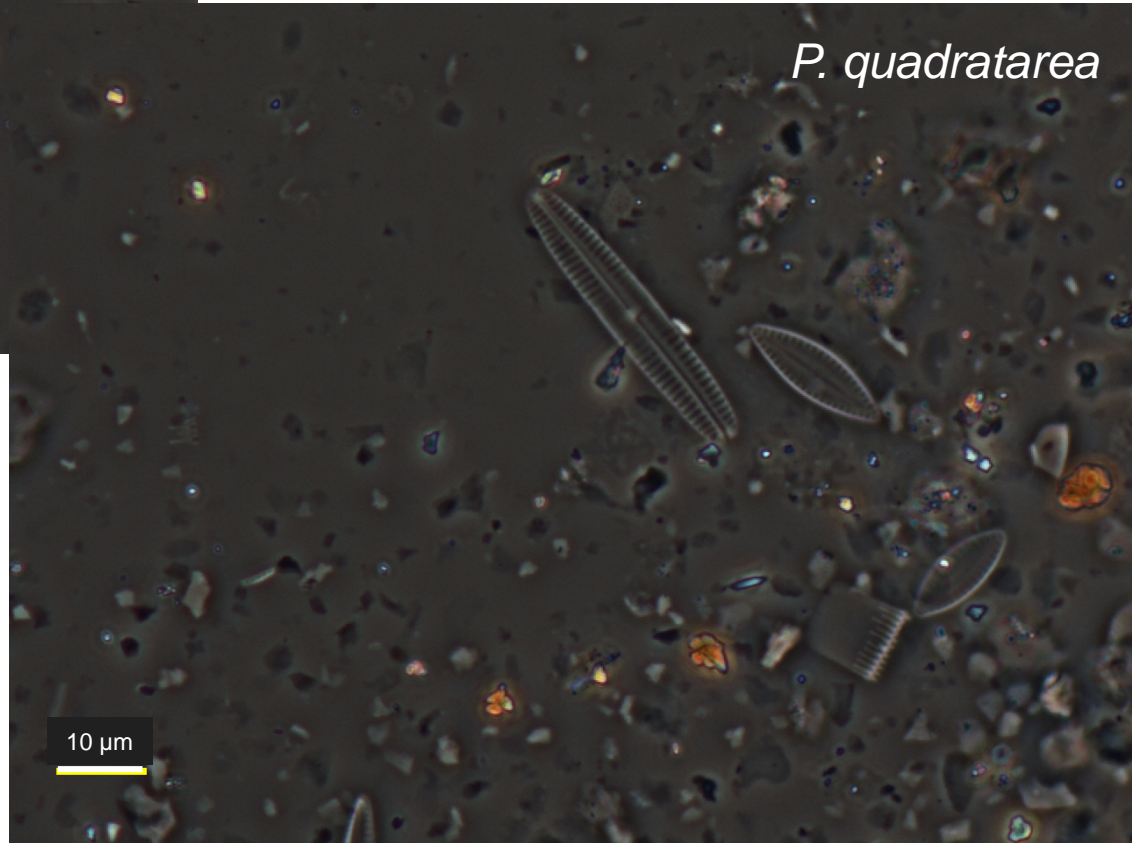
Pinnularia

P. quadratarea



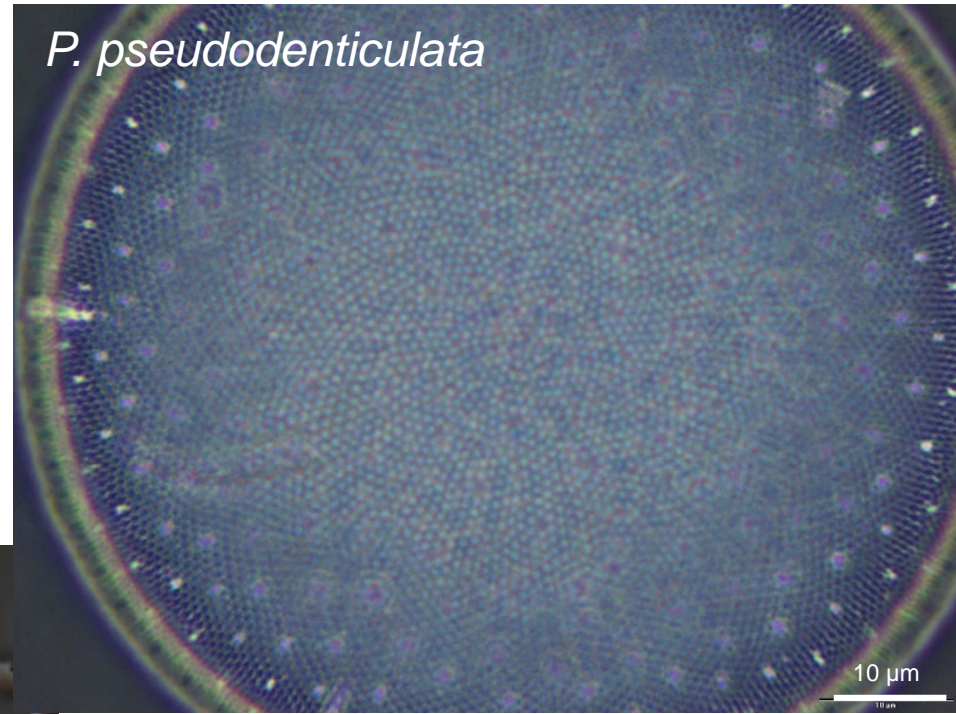
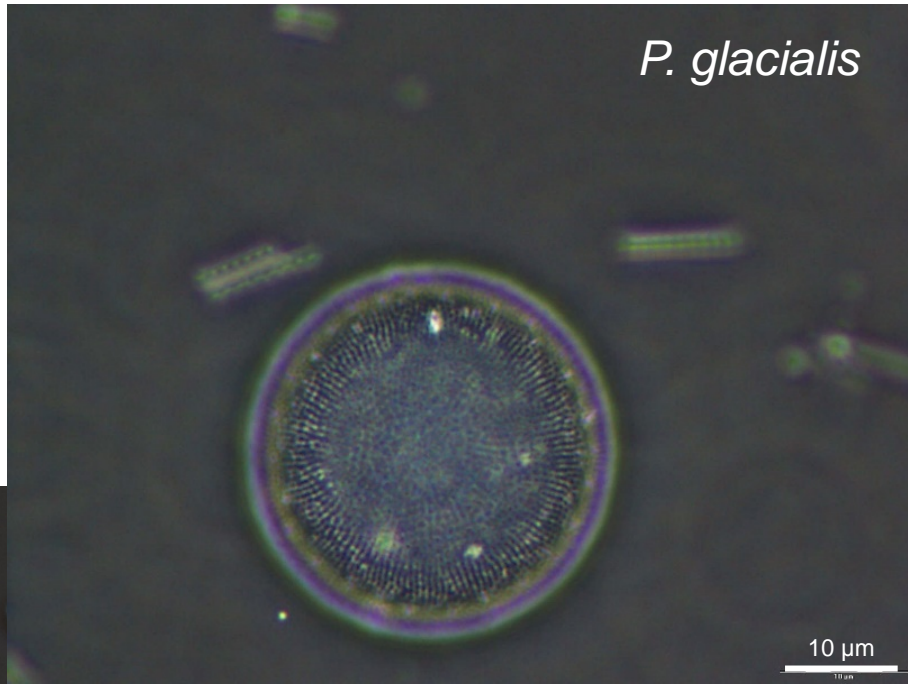
Antarctic Peninsula

P. quadratarea

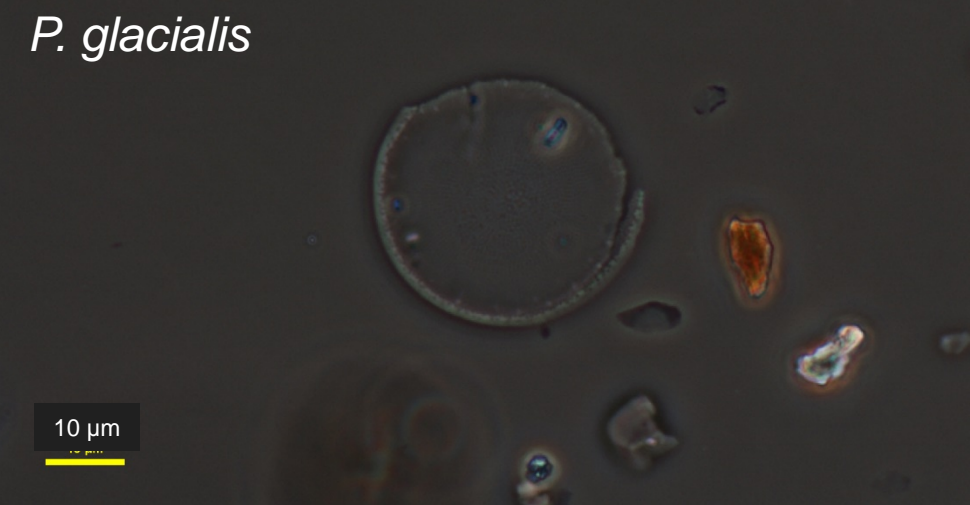


Porosira

Adélie Land



Adélie Land

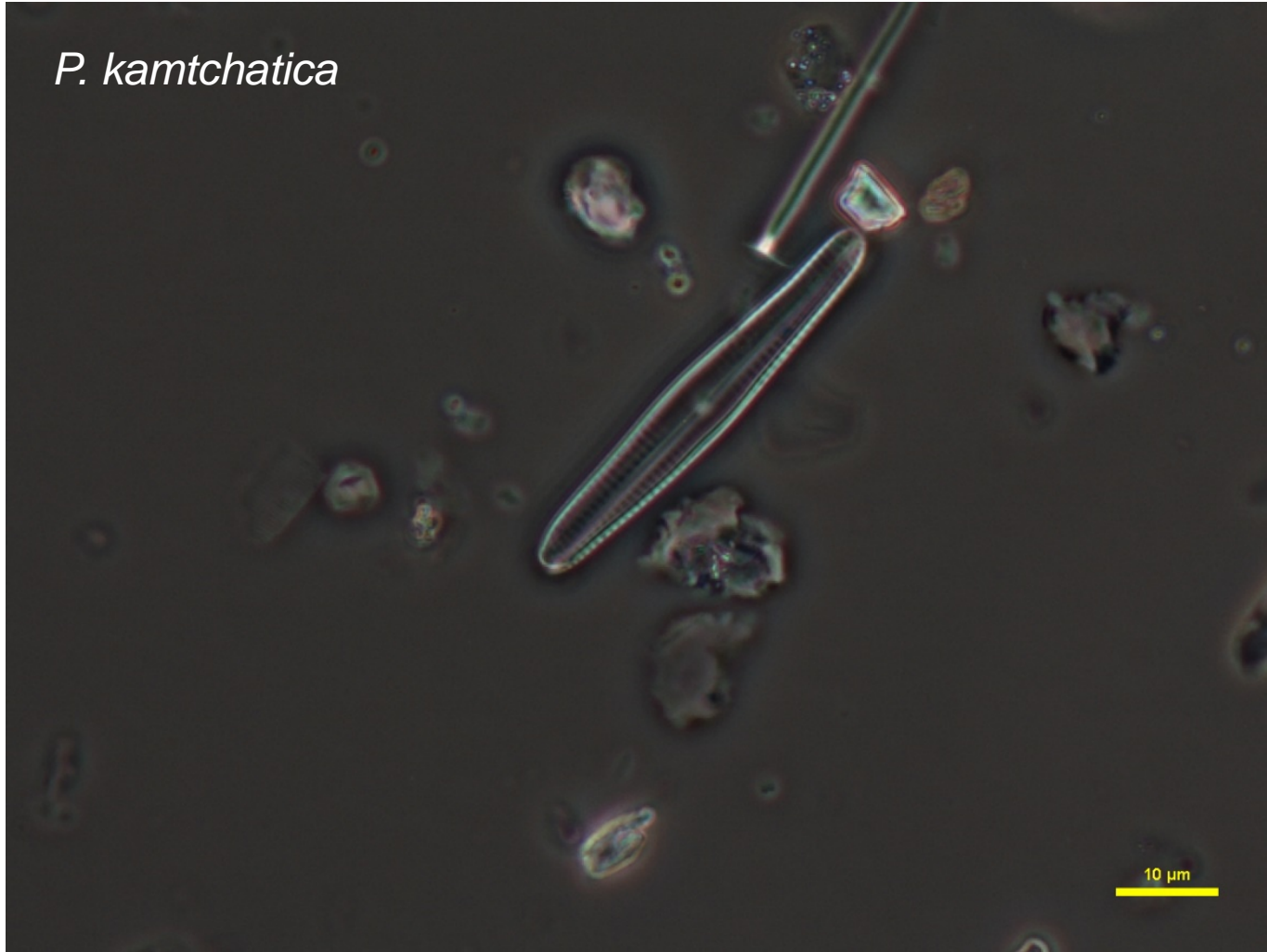


Antarctic Peninsula

Pseudogomphonema

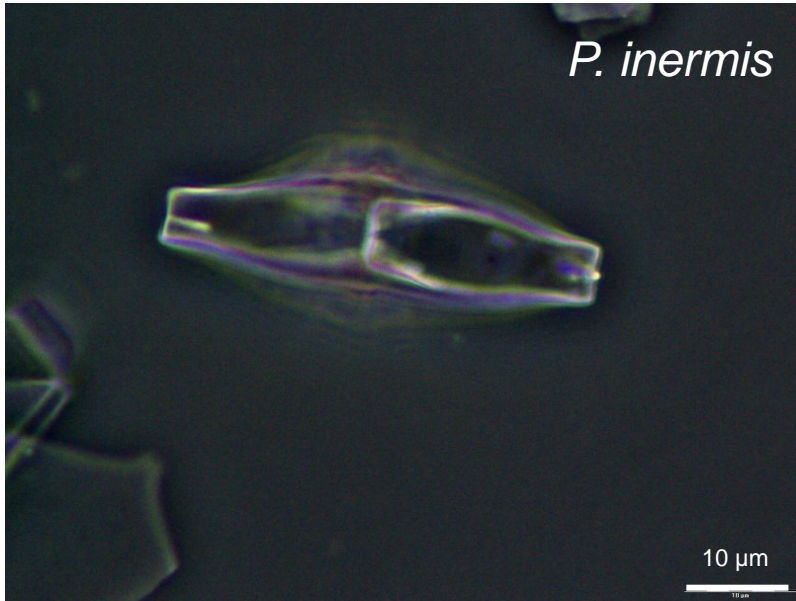
Antarctic Peninsula

P. kamtchatica

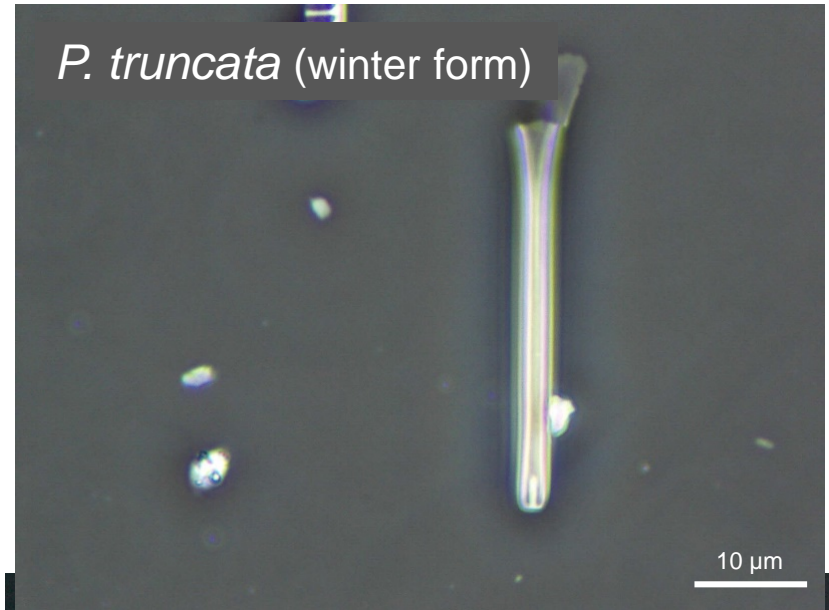


Proboscia

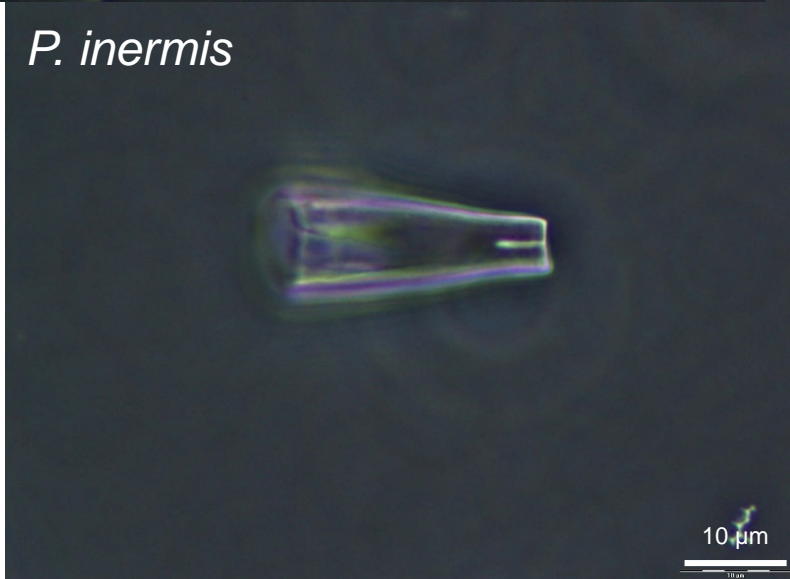
Antarctic Peninsula



Antarctic Peninsula

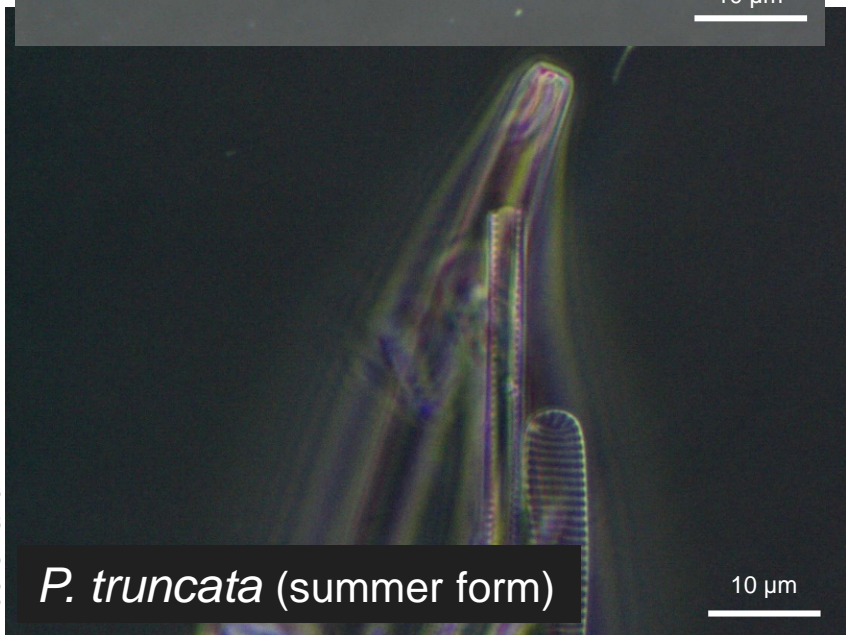


P. inermis



Adélie Land

Adélie Land



Proboscis

Antarctic Peninsula

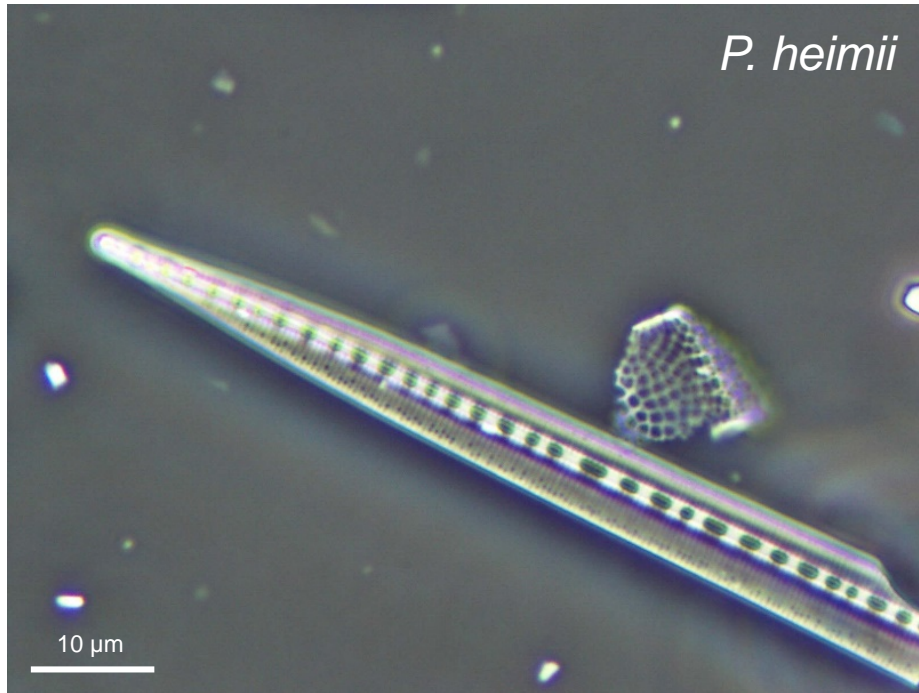
P. alata



Pseudo-Nitzschia

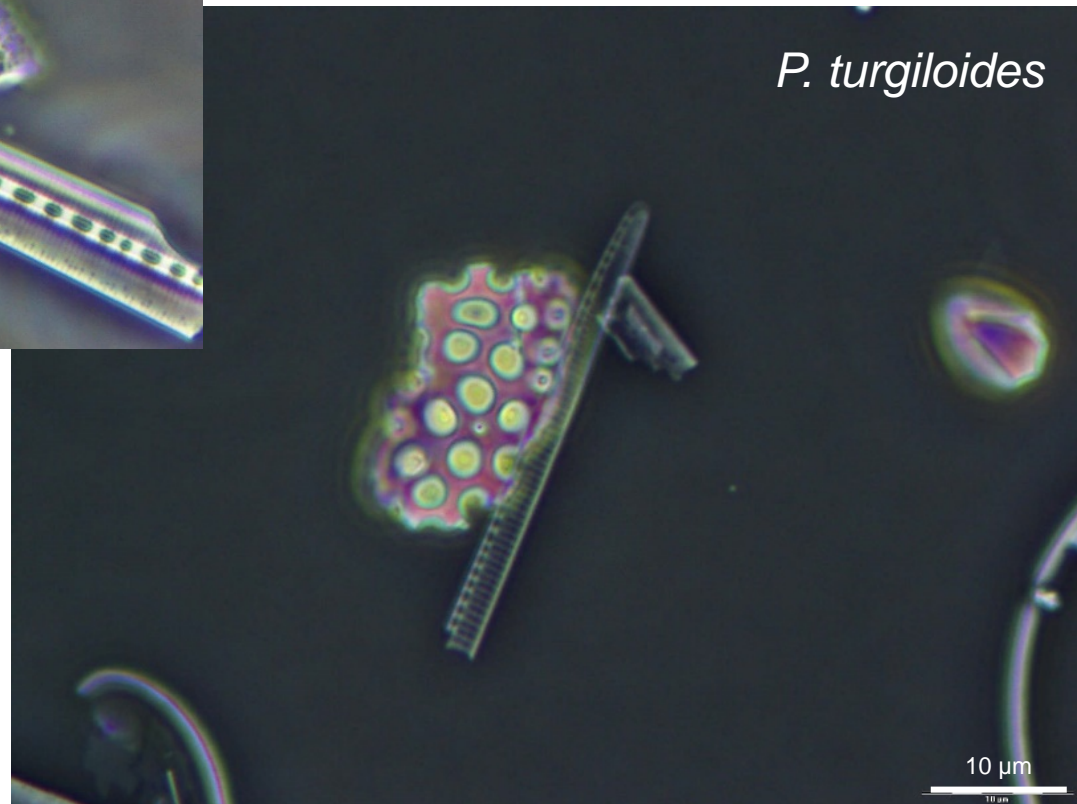
Antarctic Peninsula

P. heimii



Adélie Land

P. turgiloides



Rhizosolenia

Adélie Land

R. antennata var. *semispina*



Antarctic Peninsula

R. sima var. *sima*



R. antennata var. *antennata*



Antarctic Peninsula

R. simplex

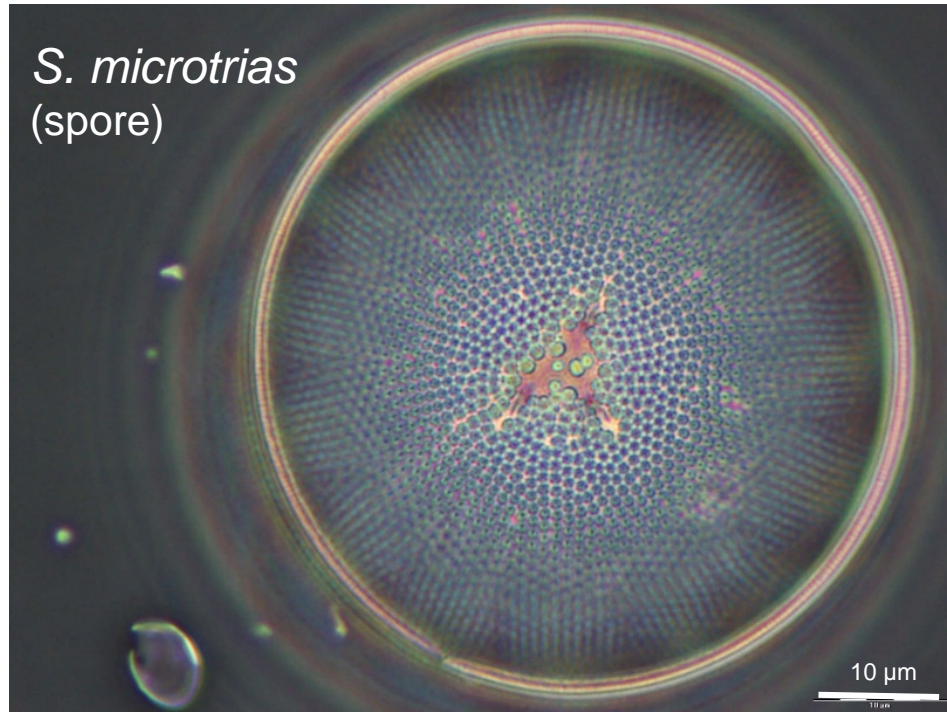


Adélie Land

Stellarima

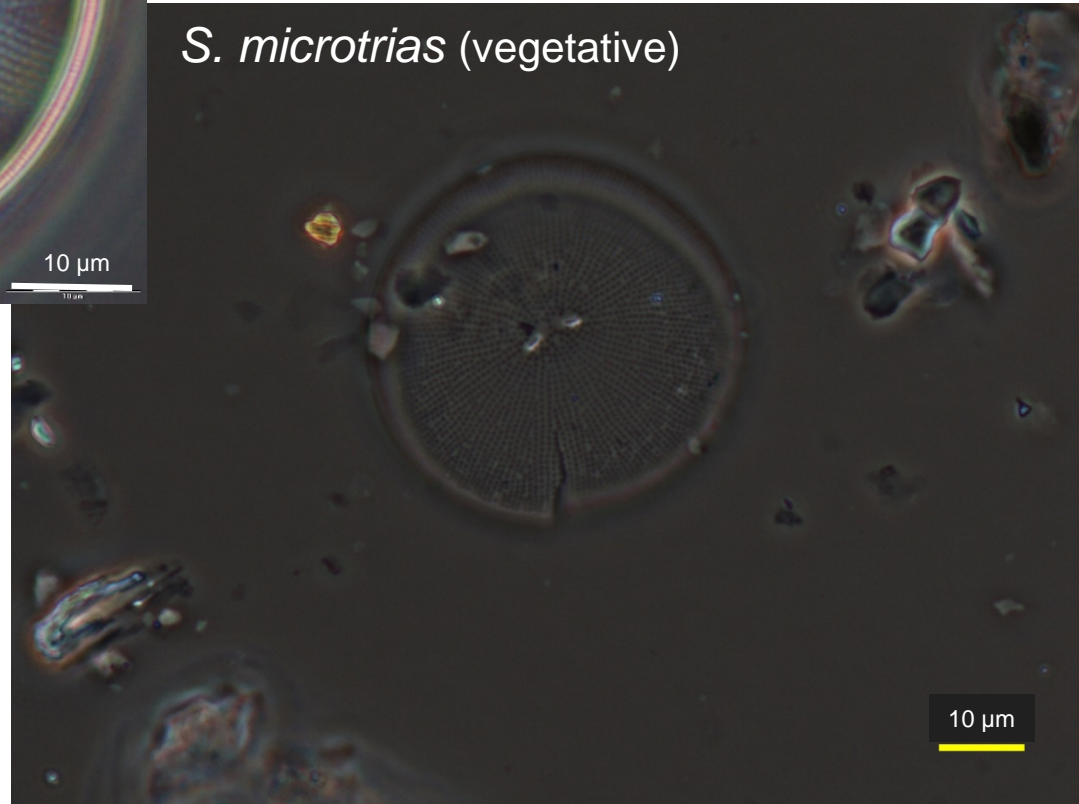
Adélie Land

S. microtrias
(spore)



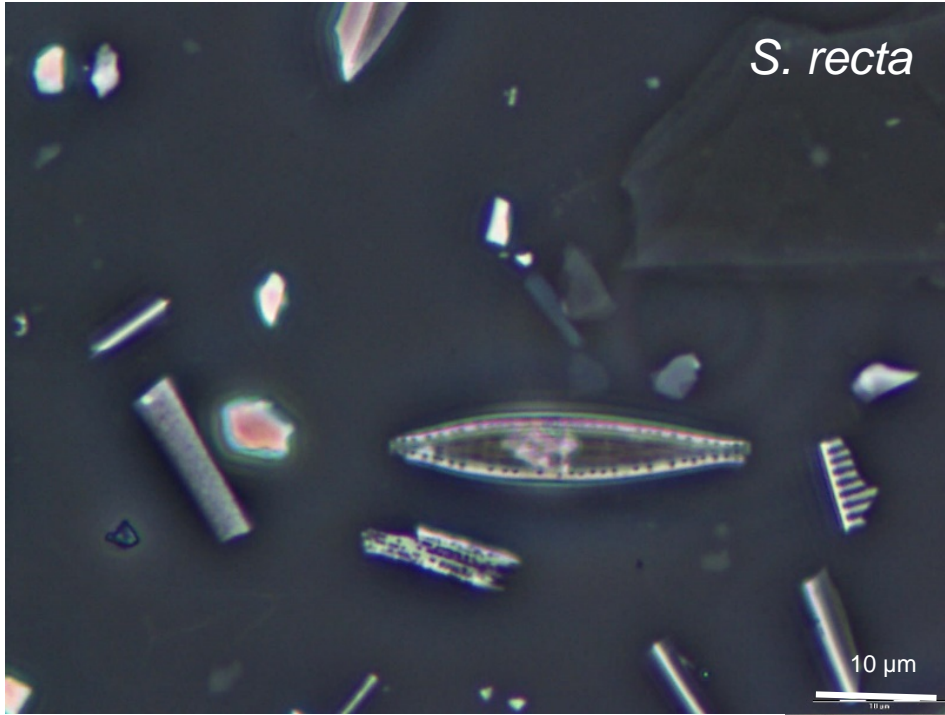
Antarctic Peninsula

S. microtrias (vegetative)

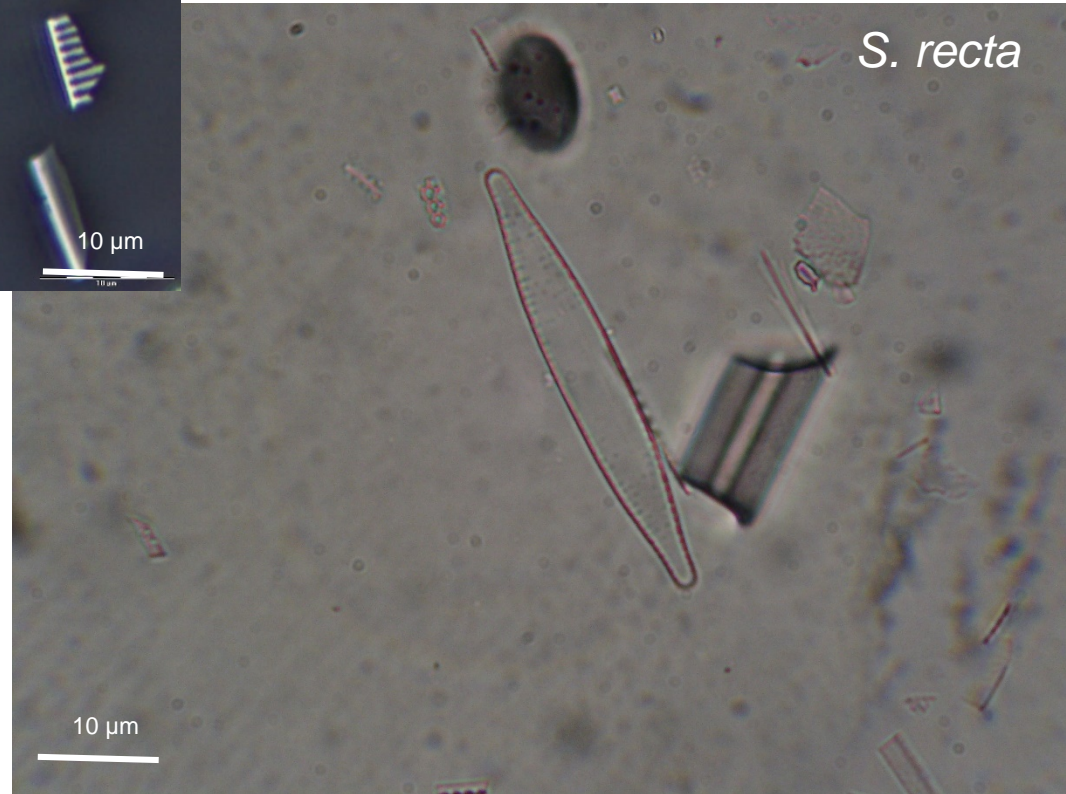


Synedropsis

Antarctic Peninsula

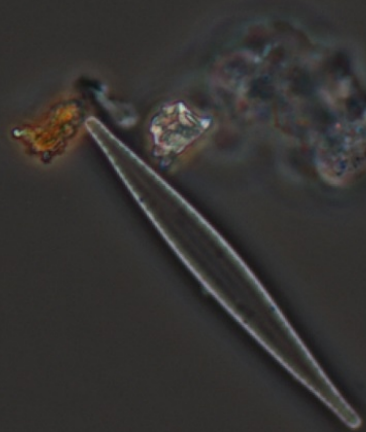


Adélie Land



Synedropsis

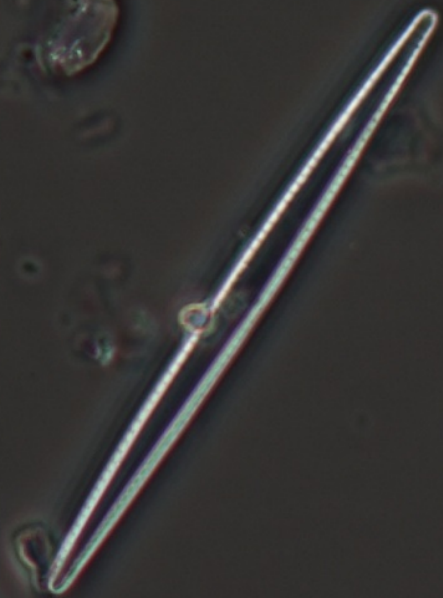
S. fragilis



Antarctic Peninsula

10 μ m

S. lata



10 μ m

Thalassiosira

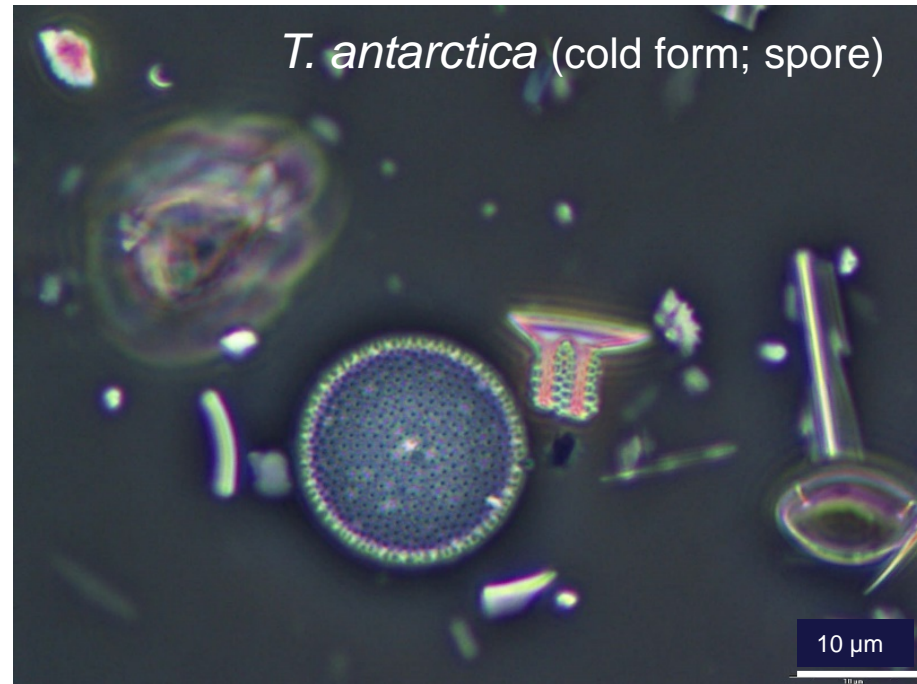
T. antarctica (cold form; spore)



Adélie Land

Antarctic Peninsula

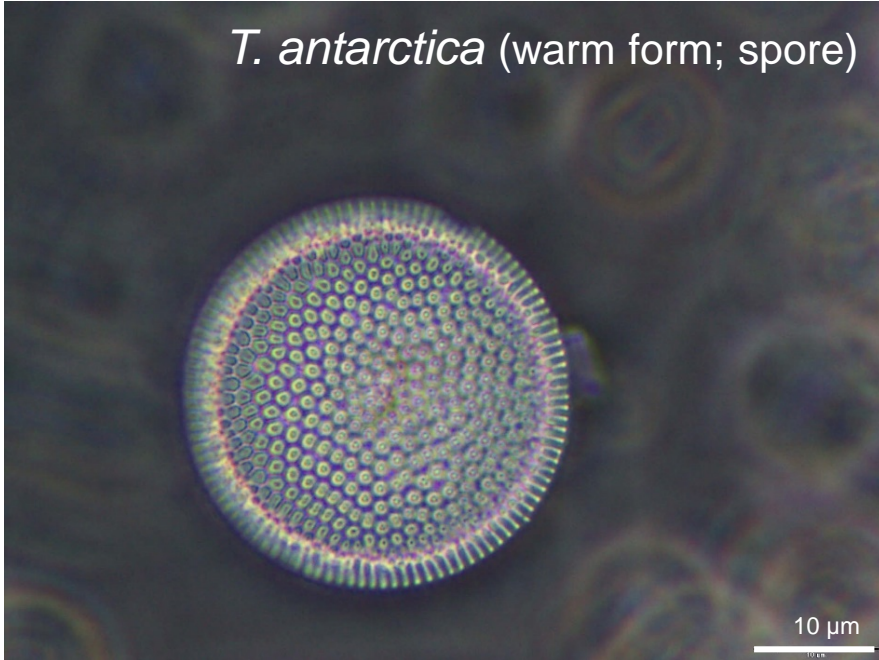
T. antarctica (cold form; spore)



Thalassiosira

Antarctic Peninsula

T. antarctica (warm form; spore)



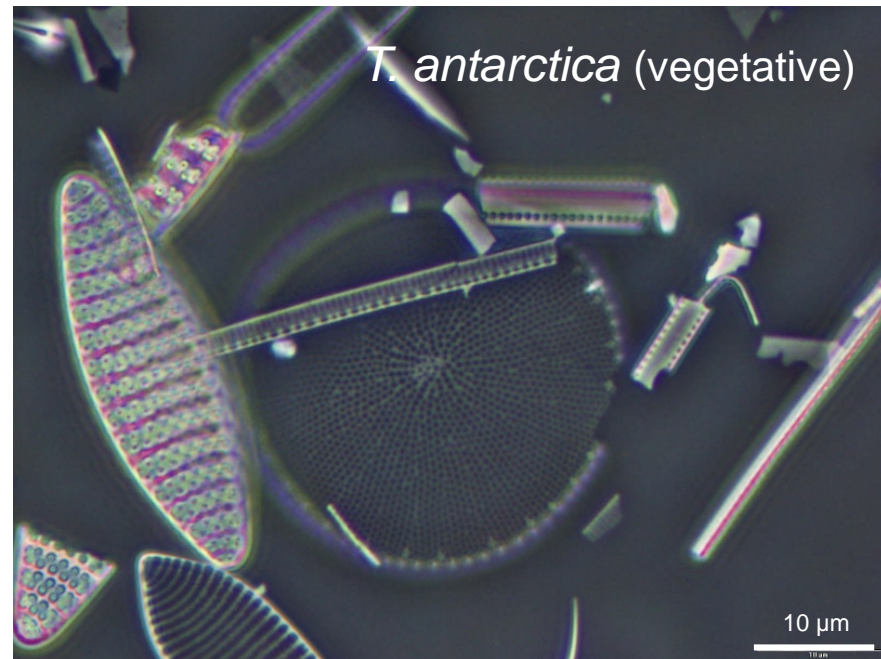
Antarctic Peninsula

T. antarctica (warm form; spore)

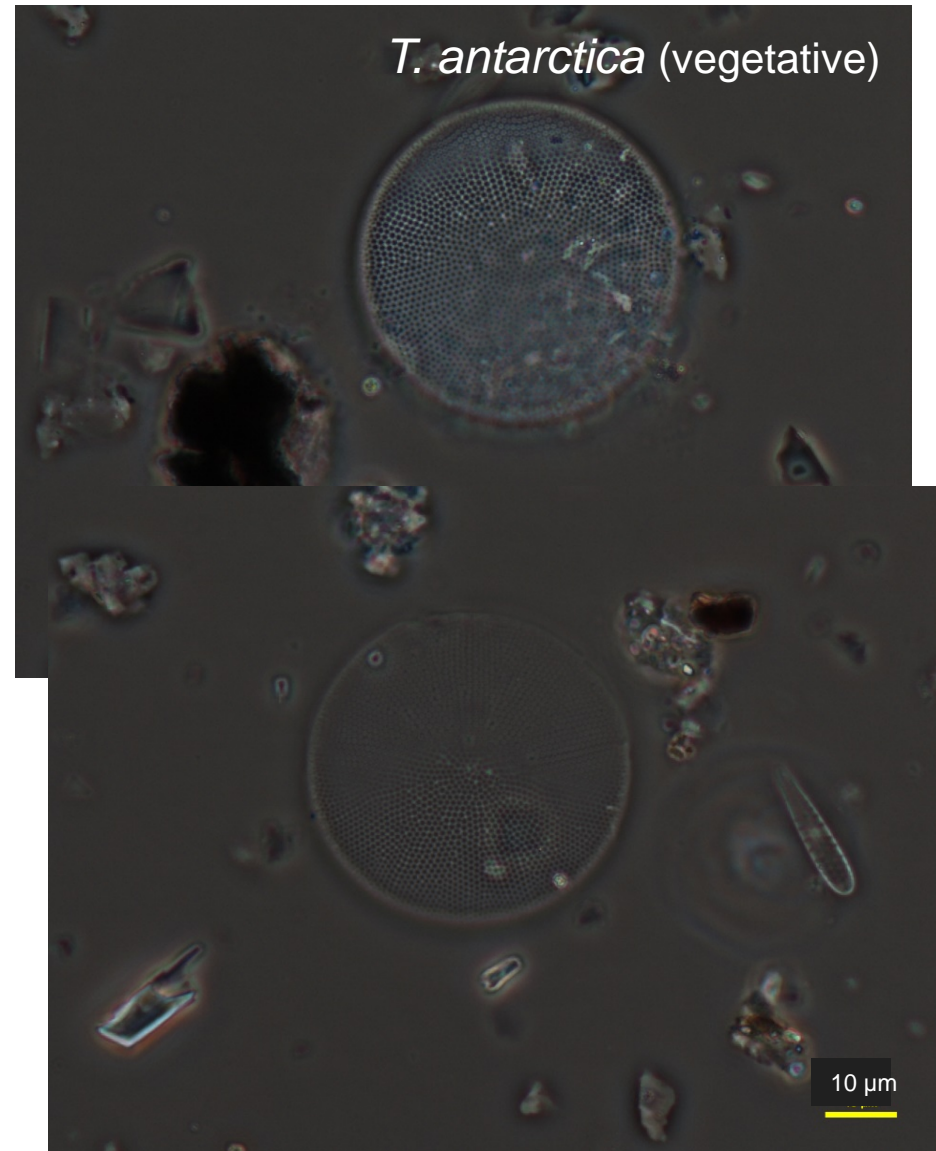


Thalassiosira

Antarctic Peninsula



Antarctic Peninsula



Thalassiosira

Antarctic Peninsula



Thalassiosira

Adélie Land

T. gracilis var. *gracilis*

10 μ m

Adélie Land

T. gracilis var. *expecta*

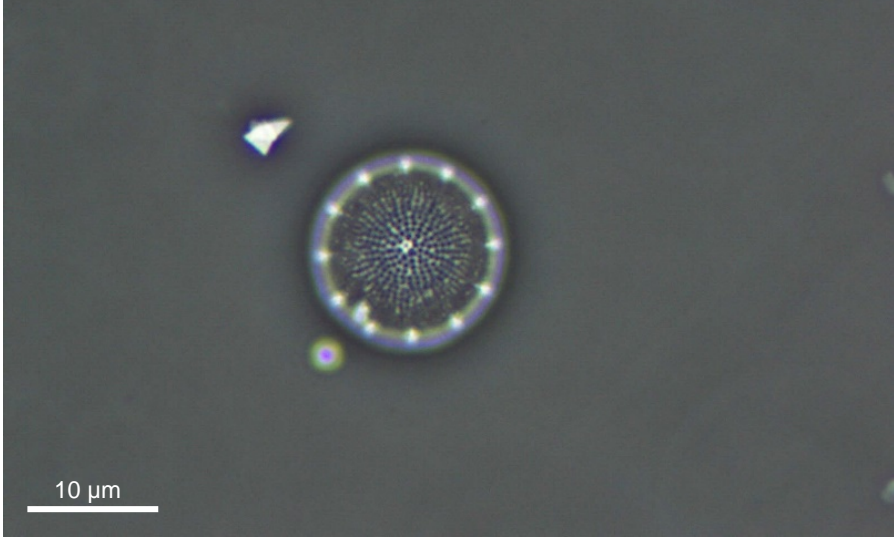
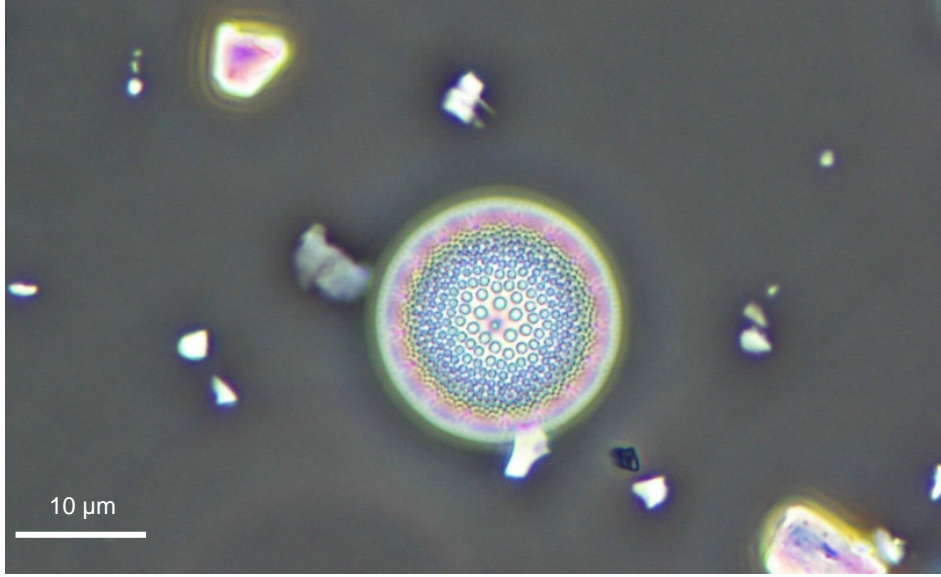
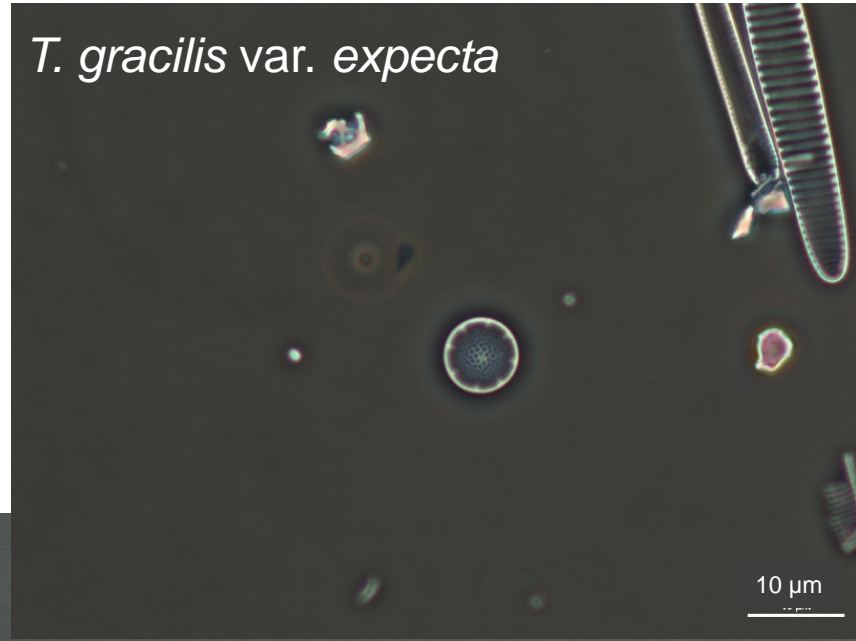
10 μ m

Antarctic Peninsula

10 μ m

10 μ m

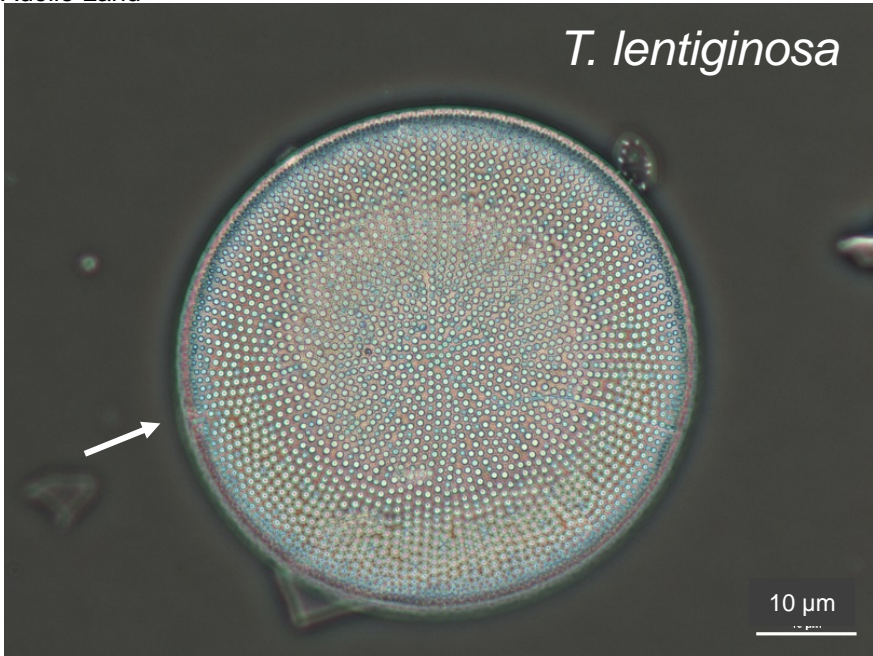
Antarctic Peninsula



Thalassiosira

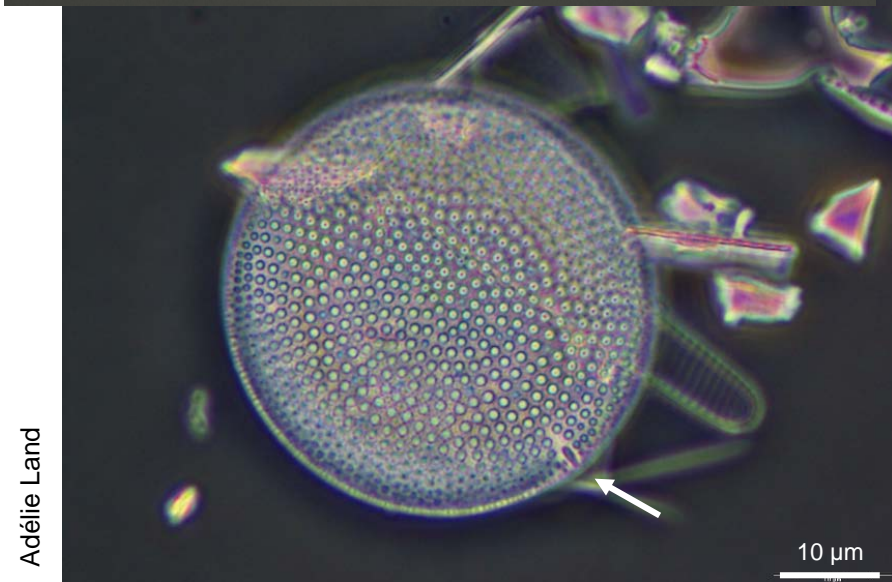
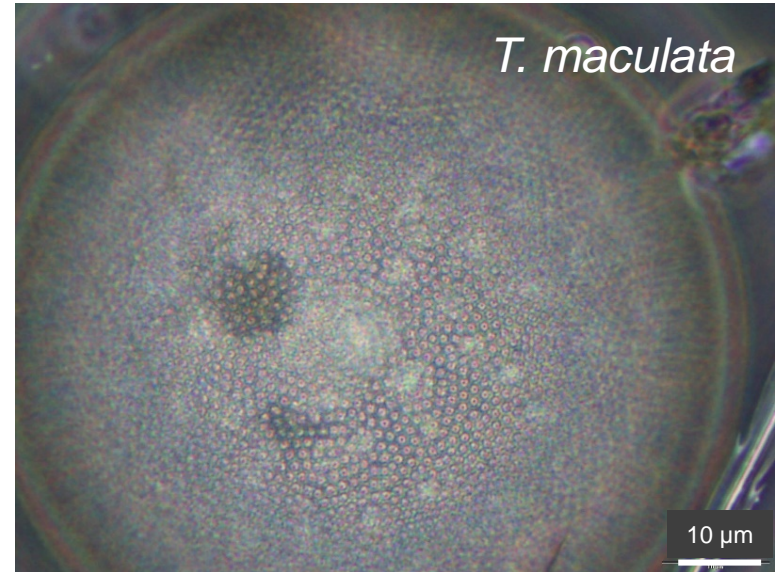
Adélie Land

T. lentiginosa



Antarctic Peninsula

T. maculata

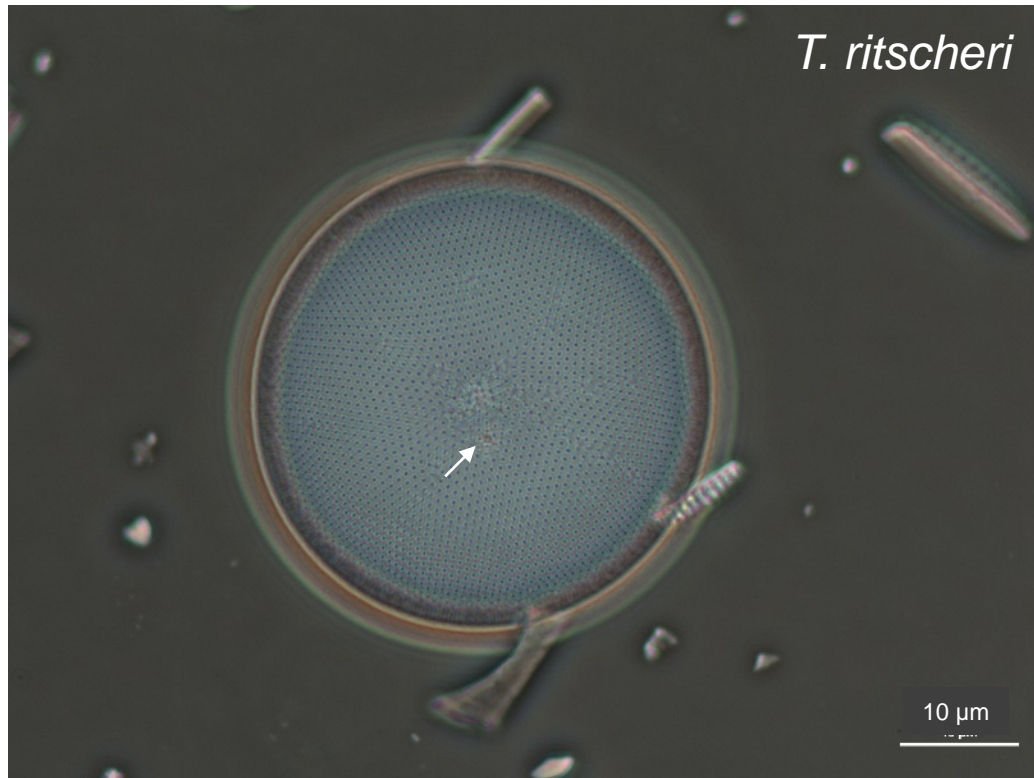


T. oliverana

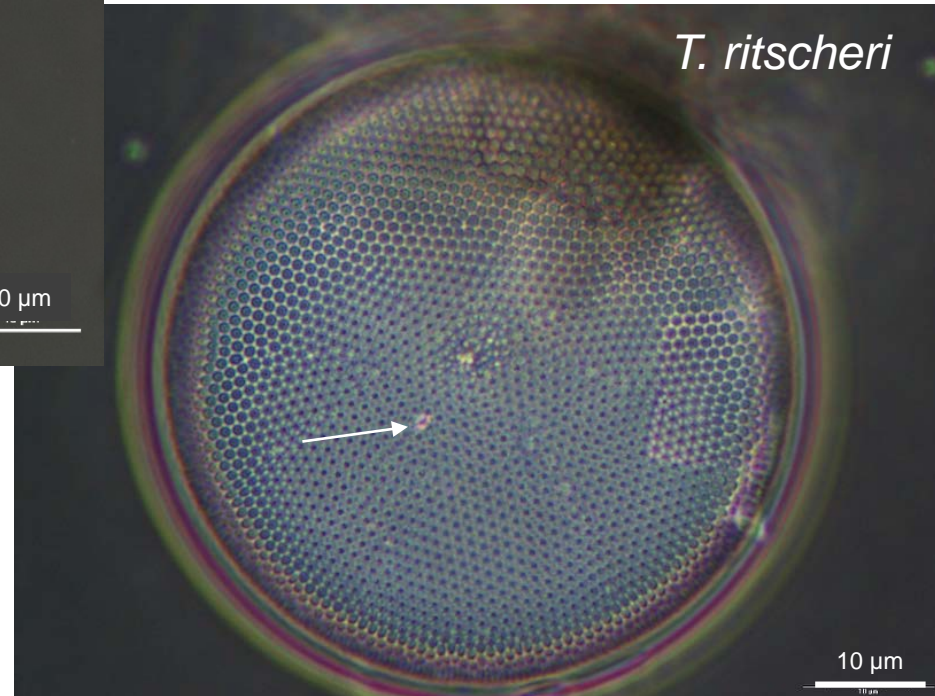


Thalassiosira

Adélie Land

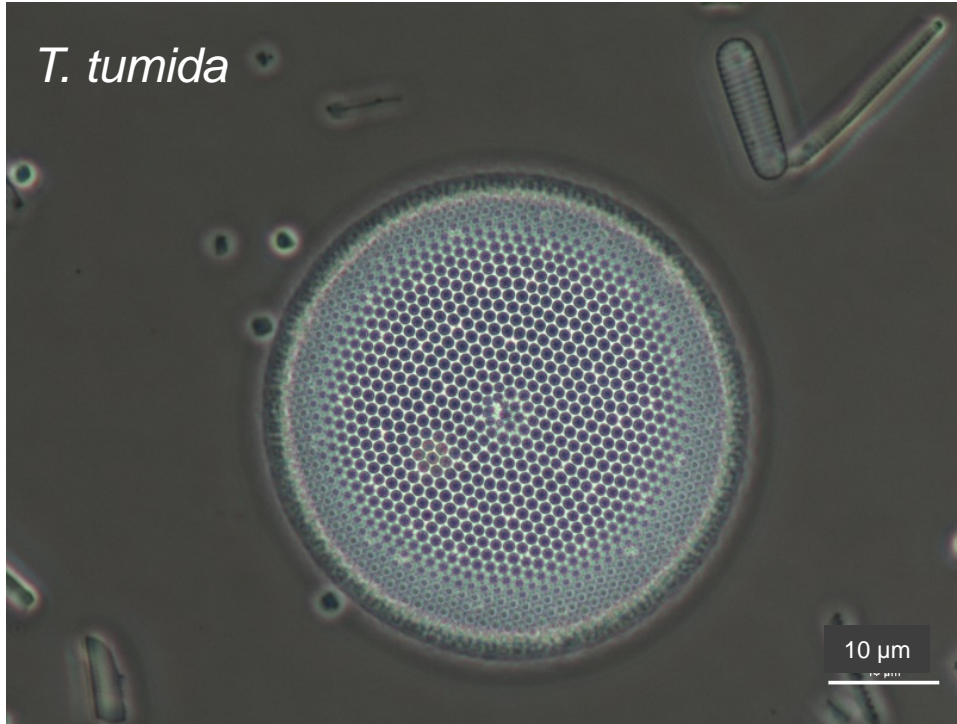


Adélie Land

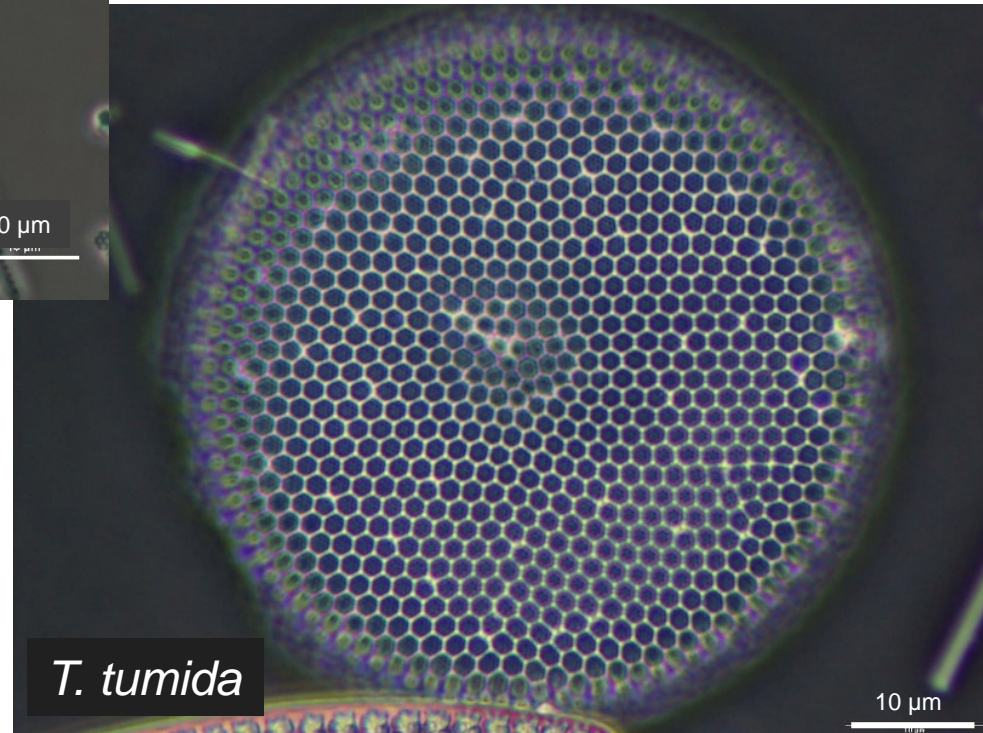


Thalassiosira

Adélie Land

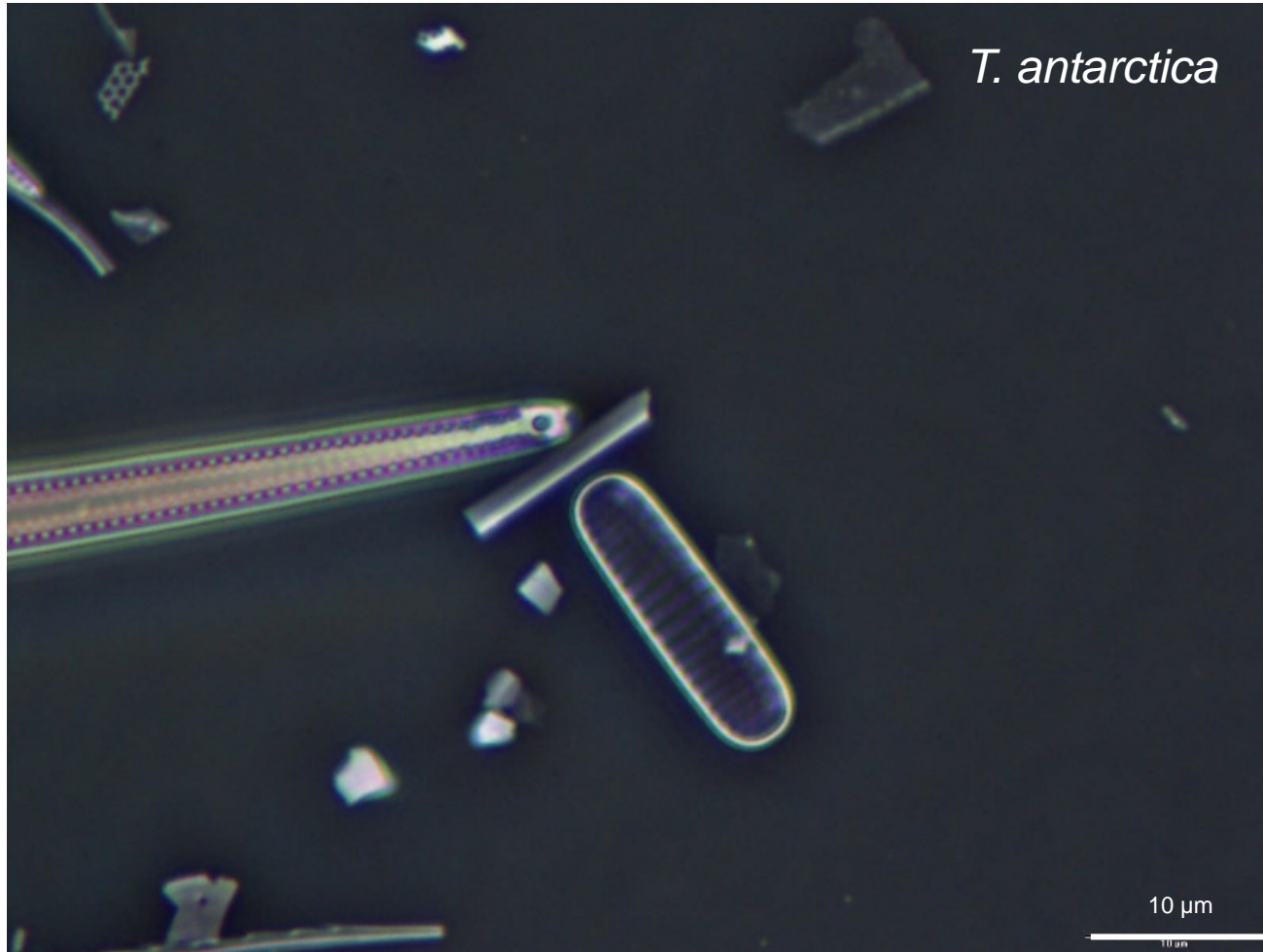


Adélie Land



Thalassiothrix

Adélie Land



Trichotoxon

Adélie Land

T. reinboldii



10 μ m

Adélie Land

T. reinboldii

10 μ m

10 μ m